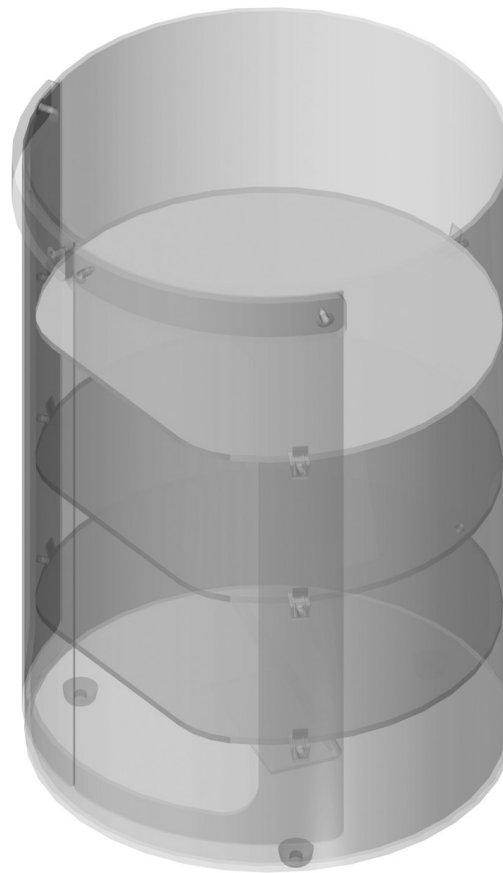


# Antunes Display Cabinet

Models DC-12C

## Daily maintenance tasks

PR 69 D1 Daily Cleaning



### **△ Hazards**


These icons alert you to a possible risk of personal injury.

### **▨ Equipment alerts**

Look for this icon to find information about how to avoid damaging the equipment while doing a procedure.

### **⊕ Tips**

Look for this icon to find helpful tips about how to do a procedure

<b>Why</b>	To ensure that the Display Cabinet is clean and displays product in an inviting way.	
<b>Time required</b>	2 minutes to prepare	10 minutes to complete
<b>Time of day</b>	After close	For 24-hour restaurants: during breakfast menu
<b>Hazard icons</b>	 Chemicals	

**Tools and supplies**



**Procedure**

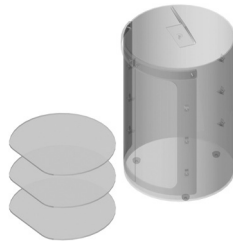
**1. Remove and store food product.**

Remove food product from the display cabinet and store properly.



**2. Remove shelves.**

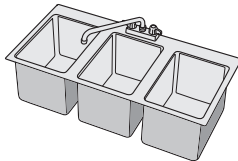
Remove the shelves from the display cabinet. Remove crumbs from the shelves with a clean, sanitizer soaked towel and dispose the crumbs into the trash receptacle.



Sanitizer Solution.

**3. Wash shelves.**

Wash the shelves at the 3-compartment sink with hot All Purpose Super Concentrate (APSC) solution. For heavier soils, spray with Heavy Duty Degreaser Solution.



Rinse the shelves in clean, hot water and then sanitize for one minute with Sanitizer Solution. Allow to air dry.



All Purpose Super Concentrate (APSC), Heavy Duty Degreaser Solution, Sanitizer

**4. Clean display cabinet.**

Spray and wipe display case inside and out including vinyl access flaps with a clean, sanitizer-soaked towel sprayed with All Purpose Super Concentrate (APSC) solution. For heavy soils, scrub the display cabinet with a NO-SCRATCH pad.



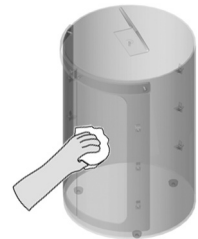
All Purpose Super Concentrate (APSC), Sanitizer Solution.



Do NOT clean the vinyl access flaps with a NO-SCRATCH pad. This can damage the flaps.

**5. Rinse display cabinet.**

Rinse the display cabinet inside and out including vinyl access flaps with a separate clean, sanitizer-soaked towel.



Sanitizer Solution.

**6. Sanitize display cabinet.**

Spray the inside and outside of the display cabinet with Sanitizer solution and allow to air dry.



Sanitizer Solution.

## Daily Cleaning (continued)

### 7. Install shelves and product.

Install shelves into display cabinet. Load product into display cabinet.

