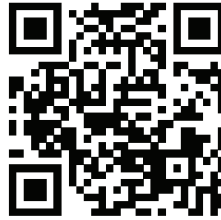


Place this manual in the Toaster section
of your Equipment Manual.
Manufactured exclusively for
McDONALD'S®

BY
ANTUNES
180 KEHOE BLVD.
CAROL STREAM, ILLINOIS 60188, U.S.A.
PHONE: +1-630-784-1000
TOLL FREE: +1-877-392-7854
FAX: +1-630-784-1650
www.antunes.com



Display Case
Scan with mobile device or enter URL
for product and service information

<http://tiny.cc/jaja-DC>

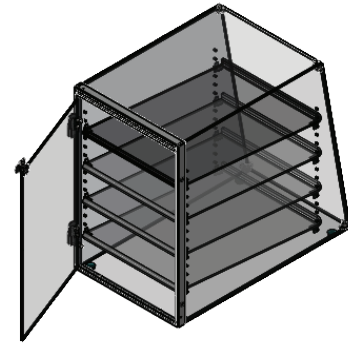


TABLE OF CONTENTS

Owner Information	2
Specifications	3
Dimensions	3
Installation	4
Unpacking.....	4
Location	4
Maintenance	5
Daily Cleaning	5
Replacement Parts	6
Notes	7

LIMITED WARRANTY

A.J. Antunes & Co. provides the following limited warranty to the original purchaser of all McDonald's Equipment.

All components are warranted against defects in the material and workmanship for a period of two (2) years. If any part becomes inoperable during the period of this warranty, A.J. Antunes & Co. will pay labor costs to an Authorized Service Agent to replace the part plus travel expenses.

WARRANTY EXCLUSIONS

- The cost of installation.
- Equipment that has been damaged due to shipment. Purchaser should make damage claim directly upon carrier.
- Alteration, misuse, abuse.
- Improper storage or handling.
- Improper maintenance.
- Failure to follow proper installation instructions, including electrical connection.
- Improper or unauthorized repairs.
- Scheduled Maintenance procedures as outlined in your MRC Card.
- Consumables such as Grill Covers (Release Sheets), gaskets, Conveyor Belt Wraps, O-rings, removal of links, and light bulbs.
- Freight, foreign, excise, municipal, or other sales or use taxes.
- Consequential damages such as loss of profit, loss of time, the cost of repairing or replacing other property which is damaged, or any other incidental damage of any kind.

A.J. Antunes & Co. reserves the right to make changes in design or add improvements on any products. The right is always reserved to modify Equipment because of factors beyond our control and government regulation. Changes to Equipment do not constitute a warranty charge. This warranty is exclusive and is in lieu of all other warranties, expressed or implied, including any implied warranty of merchantability or fitness for a particular purpose, each of which is expressly disclaimed. The remedies described above are exclusive, and in no event shall A.J. Antunes & Co. or any of its Divisions be liable for special consequential or incidental damages for the breach or delay in the performance of this warranty.

This manual is for the exclusive use of licensees and employees of McDonald's Systems, Inc..

© McDonald's Corporation All Rights Reserved

OWNER INFORMATION

General

This manual provides the safety, installation, and operating procedures. We recommend that all information contained in this manual be read prior to installing and operating the unit.

This unit is manufactured from the finest materials available, assembled to strict quality standards, and tested at the factory to ensure dependable trouble-free operation.

Warranty Information

Please read the full text of the Limited Warranty printed on the front cover of this manual.

If the unit arrives damaged, contact the carrier immediately and file a damage claim with them. Save all packing materials when filing a claim. Freight damage claims are the responsibility of the purchaser and NOT covered under warranty.

The warranty does NOT extend to:

- Damages caused in shipment or damage as result of improper use.
- Installation of electrical service.
- Installation, calibration, or adjustment.
- Normal maintenance outlined in this manual.
- Consumable parts such as Egg Rings, gaskets, rubber feet, labels, O-rings, light bulbs, etc.
- Malfunction resulting from improper service or maintenance.
- Damage caused by improper installation, abuse, or careless handling.
- Damage from moisture getting into electrical components.
- Damage from tampering with, removal of, or changing any preset control or safety device.
- Damage caused by parts or components not provided by Antunes.

Service/Technical Assistance

If you experience any problems with the installation or operation of your unit, contact Antunes Technical Service at **+1-877-392-7854 (toll free)**.

Fill in the information below and have it handy when calling Antunes Technical Service for assistance. The serial number is on the specification plate located on the side of the unit.

Purchased From: _____

Date of Purchase: _____

Model No.: _____

Serial No.: _____

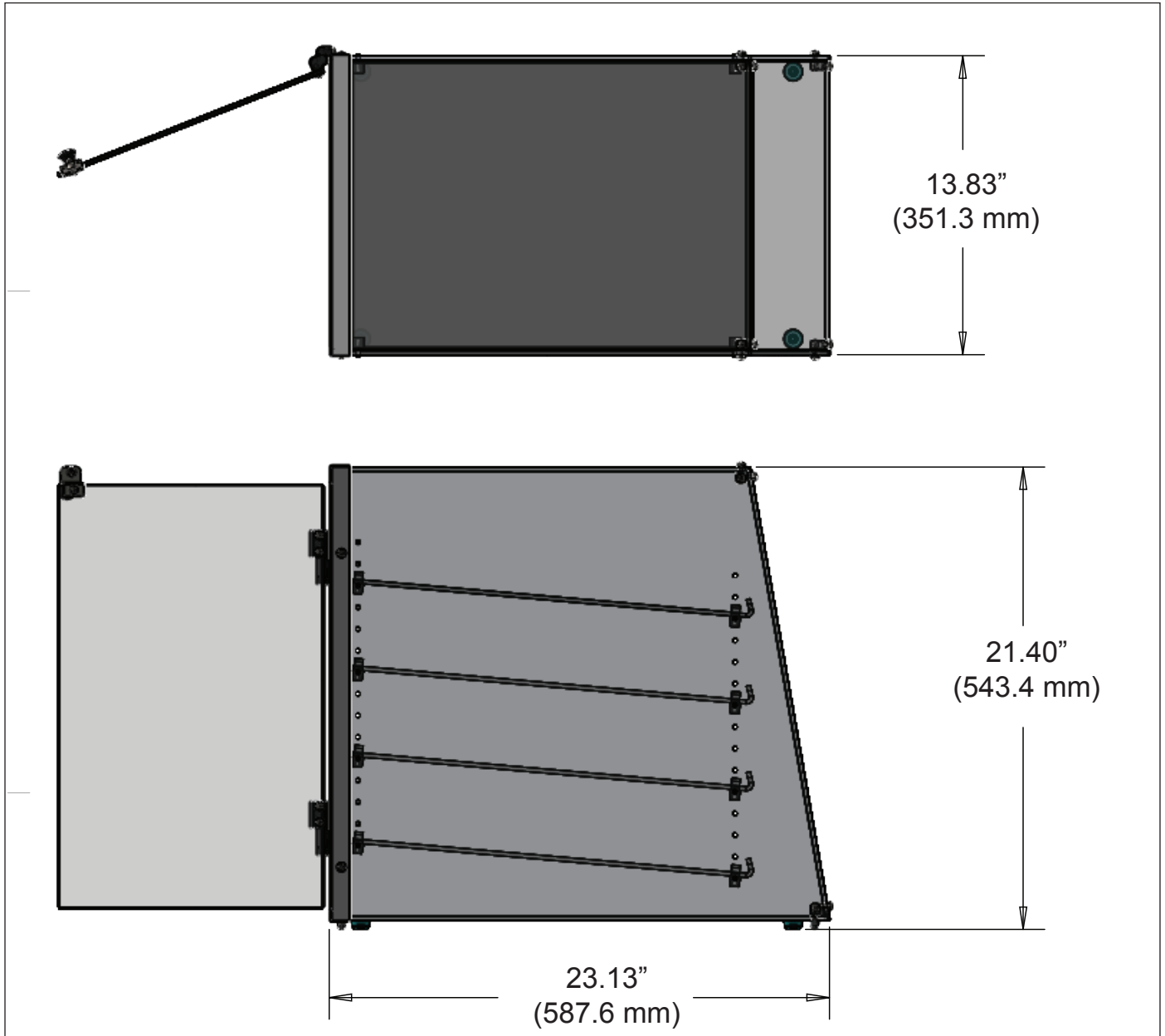
Mfg. No.: _____

Use only genuine Antunes replacement parts in this unit. Use of replacement parts other than those supplied by the manufacturer will void the warranty.

IMPORTANT! Keep these instructions for future reference. If the unit changes ownership, be sure this manual accompanies the equipment.

SPECIFICATIONS

Dimensions



INSTALLATION

Unpacking

1. Open the large box. It contains:
 - DC-22A Display Case
 - Three shelves
 - Owner's Manual & PM Card
2. Remove the foam inserts from the box.
3. Carefully remove the display case from the large box.
4. Perform the Daily Cleaning steps found in the Maintenance section of this manual.

NOTE: If any parts are missing or damaged, contact Antunes Customer Service IMMEDIATELY at +1-877-392-7856 (toll free).

Location

When placing the toaster into service, pay attention to the following guidelines:

- Do NOT block or cover any openings on the unit.
 - Keep away from heated surfaces.
1. Place the display case in the required position designated by McDonald's.
 2. Load product into the display case.



Figure 1. DC-22A Display Case

MAINTENANCE**Daily Cleaning**

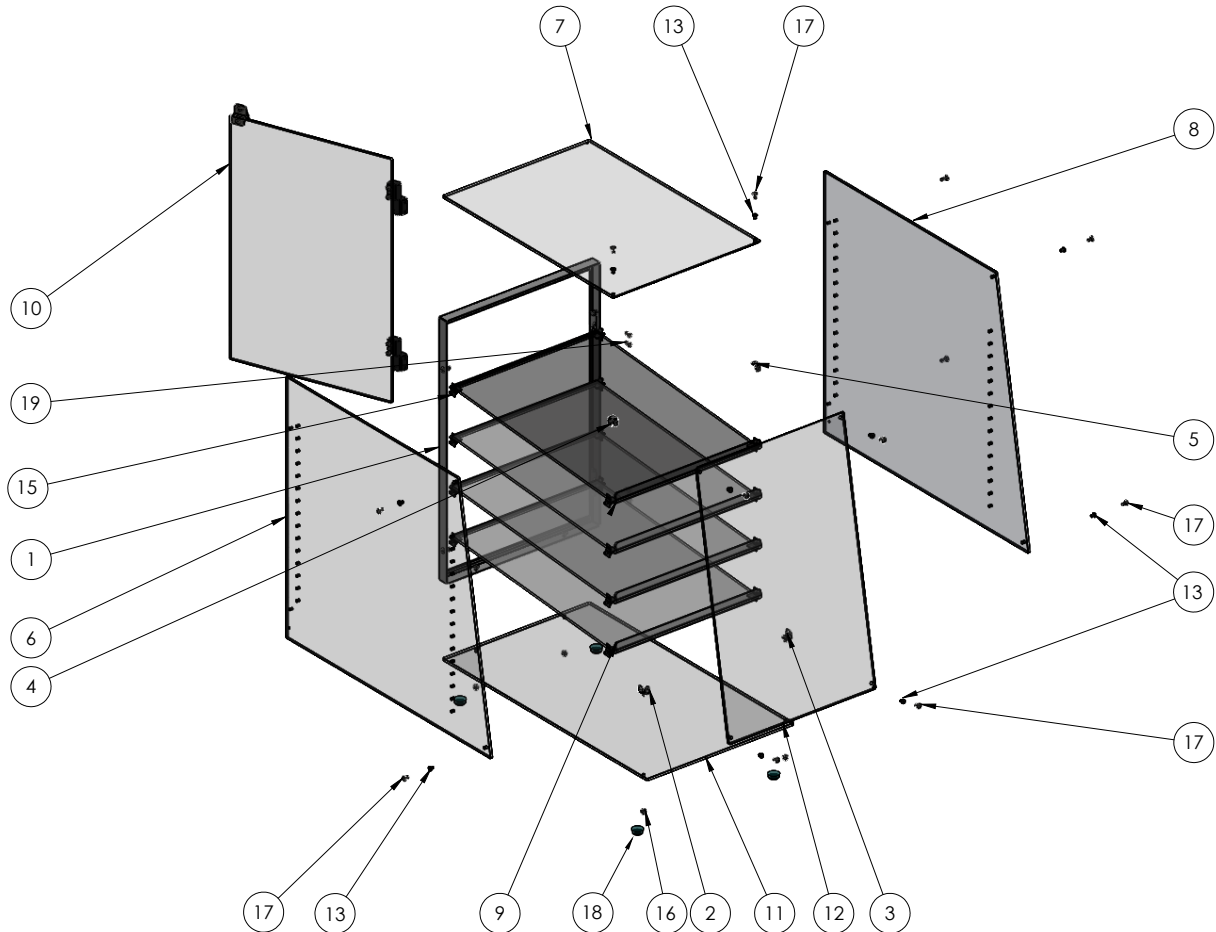
Follow these steps to clean the Display Case.

1. Remove food product from the display case and store properly.
2. Remove the shelves from the display case. Remove the crumbs from the shelves with a clean, sanitizer-soaked towel and dispose the crumbs into the trash receptacle.
3. Take the shelves to the 3-compartment sink to wash with hot, KAY® SolidSense™ All Purpose Super Concentrate (APSC) solution. For heavier soils, pre-spray with KAY® QSR Heavy Duty Degreaser solution prior to washing.
4. Rinse the shelves with clean, hot water at the 3-compartment sink.
5. Sanitize the shelves with KAY® SolidSense™ Sanitizer solution for one minute at the 3-compartment sink and allow to air dry.
6. Using a clean, sanitizer-soaked towel; sweep crumbs out of the display case and empty into the trash receptacle.
7. Spray and wipe the interior and exterior walls of the display case with KAY® APSC solution and a clean, sanitizer-soaked towel. For heavy soils, scrub the display case walls with a KAY® NO-SCRATCH™ Pad.
8. Rinse the interior and exterior walls of the display case with a separate, clean sanitizer-soaked towel.
9. Spray the interior and exterior walls of the display case with KAY® SolidSense™ Sanitizer solution and allow to air dry.
10. Reinstall the shelves and load food product.

REPLACEMENT PARTS

Item	Part No.	Description	Qty.
1	0022644	Rear Door Frame Weldment	1
2	0507691	LH Lower Bracket	1
3	0507692	RH Lower Bracket	1
4	0507693	LH Upper Bracket	1
5	0507694	RH Upper Bracket	1
6	0900361	LH Acrylic Panel	1
7	0900364	Acrylic Top Panel	1
8	0900362	RH Acrylic Panel	1
9	7001193	Shelf	4
10	7001848	Rear Door Assembly	1
11	0900360	Base Acrylic Panel	1
12	0900365	Acrylic Front Panel	1
13	212P267*	Spacer #8 Screw Shoulder	1
14	308P105*	8-30 x .50 LG Truss Head Slotted 1	1
15	218P456*	Shelf Rest Clip	1
16	308P145*	Nut, Hex Acorn #8-32 Low Crown	1
17	308P104*	8-32 x 3/8 LG. S.S. Truss Head	1
18	2100362	Bumper Foot	4
19	310P176*	10-24 x 3/8 Fillister Head S.S.	1

* Available in packages of ten





Antunes

Corporate Headquarters

Carol Stream, Illinois

Phone: +1 (630) 784-1000

Toll Free: +1 (800) 253-2991

Fax: +1 (630) 784-1650

China Facility

Suzhou, China

Phone: +86-512-6841-3637

Fax: +86-512-6841-3907