

Place this manual in the Toaster section
of your Equipment Manual.
Manufactured exclusively for
McDONALD'S®

BY
ANTUNES
180 KEHOE BLVD.
CAROL STREAM, ILLINOIS 60188, U.S.A.
PHONE: 1-630-784-1000
TOLL FREE: 1-877-392-7854
FAX: 1-630-784-1650
www.antunes.com



VCT Family

Scan with mobile device or enter URL
for product and service information.

<http://tiny.cc/ajaVCT>



TABLE OF CONTENTS

Owner Information	2	Maintenance	10
General.....	2	Daily Cleaning	10
Service/Technical Assistance	2	Replacing the Belt Wraps	
Warranty Information	2	(Every 3–6 Months).....	10
Specifications	3	Checking the Conveyor Belt Chains	
Electrical Ratings & Plug Configurations.....	3	(Every 3–6 Months).....	11
Dimensions	3	Checking the Roller Tensioners	
Important Safety Information	4	(every 3–6 months)	12
Installation	5	Troubleshooting	13
Unpacking.....	5	Replacement Parts	16
Equipment Setup	5	Wiring Diagram	21
Assembling the Unit	5	Notes	22
Operation	7		
Operating Instructions	7		
Temperature Adjustments.....	7		
Hi-Limit Reset Button	9		
Fault Codes	9		

LIMITED WARRANTY

Antunes provides the following limited warranty to the original purchaser of all McDonald's Equipment.

All components are warranted against defects in the material and workmanship for a period of two (2) years. If any part becomes inoperable during the period of this warranty, Antunes will pay labor costs to an Authorized Service Agent to replace the part plus travel expenses.

WARRANTY EXCLUSIONS

- The cost of installation.
- Equipment that has been damaged due to shipment. Purchaser should make damage claim directly upon carrier.
- Alteration, misuse, abuse.
- Improper storage or handling.
- Improper maintenance.
- Failure to follow proper installation instructions, including electrical connection.

- Improper or unauthorized repairs.
- Scheduled Maintenance procedures as outlined in your MRC Card.
- Consumables such as Grill Covers (Release Sheets), gaskets, Conveyor Belt Wraps, O-rings, removal of links, and light bulbs.
- Freight, foreign, excise, municipal, or other sales or use taxes.
- Consequential damages such as loss of profit, loss of time, the cost of repairing or replacing other property which is damaged, or any other incidental damage of any kind.

A.J. Antunes & Co. reserves the right to make changes in design or add improvements on any products. The right is always reserved to modify Equipment because of factors beyond our control and government regulation. Changes to Equipment do not constitute a warranty charge. This warranty is exclusive and is in lieu of all other warranties, expressed or implied, including any implied warranty of merchantability or fitness for a particular purpose, each of which is expressly disclaimed. The remedies described above are exclusive, and in no event shall A.J. Antunes & Co. or any of its Divisions be liable for special consequential or incidental damages for the breach or delay in the performance of this warranty.

This manual is for the exclusive use of licensees and employees of McDonald's Systems, Inc..
© McDonald's Corporation All Rights Reserved

VERTICAL CONTACT TOASTER

OWNER INFORMATION

General

This manual provides the safety, installation, and operating procedures for this unit. Please read this manual prior to installing and operating the unit.

This unit is manufactured from the finest materials available and assembled to our strict quality standards. This unit has been tested at the factory to ensure dependable trouble-free operation.

Service/Technical Assistance

If you experience any problems with the installation or operation of your unit, contact Antunes Technical Service.

Warranty Information

Please read the full text of the Limited Warranty in this manual.

If the unit arrives damaged, contact the carrier immediately and file a damage claim with them. Save all packing materials when filing a claim. Freight damage claims are the responsibility of the purchaser and are not covered under warranty.

The warranty does NOT extend to:

- Damages caused in shipment or damage as result of improper use.
- Installation of electrical service.
- Normal maintenance as outlined in this manual.
- Malfunction resulting from improper maintenance.
- Damage caused by abuse or careless handling.
- Damage from moisture into electrical components.
- Damage from tampering with, removal of, or changing any preset control or safety device.

If you experience any problems with the installation or operation of your unit, contact Antunes Technical Service at **1-877-392-7854 toll free in the U.S.) or at 630-784-1000.**

Fill in the information below and have it handy when calling Antunes Technical Service for assistance. The serial number is on the specification plate located on the side of the unit.

Purchased From: _____

Date of Purchase: _____

Model No.: _____

Serial No.: _____

Mfg. No.: _____

Network ID Number: _____

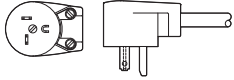
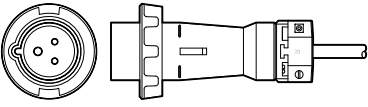
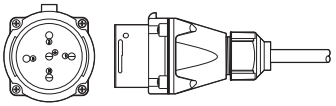
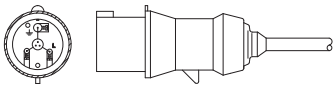
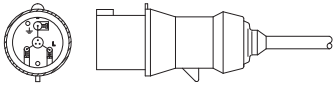
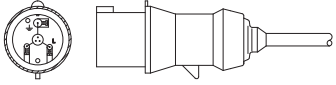
Use only genuine Antunes replacement parts in this unit. Use of replacement parts other than those supplied by the manufacturer will void the warranty.

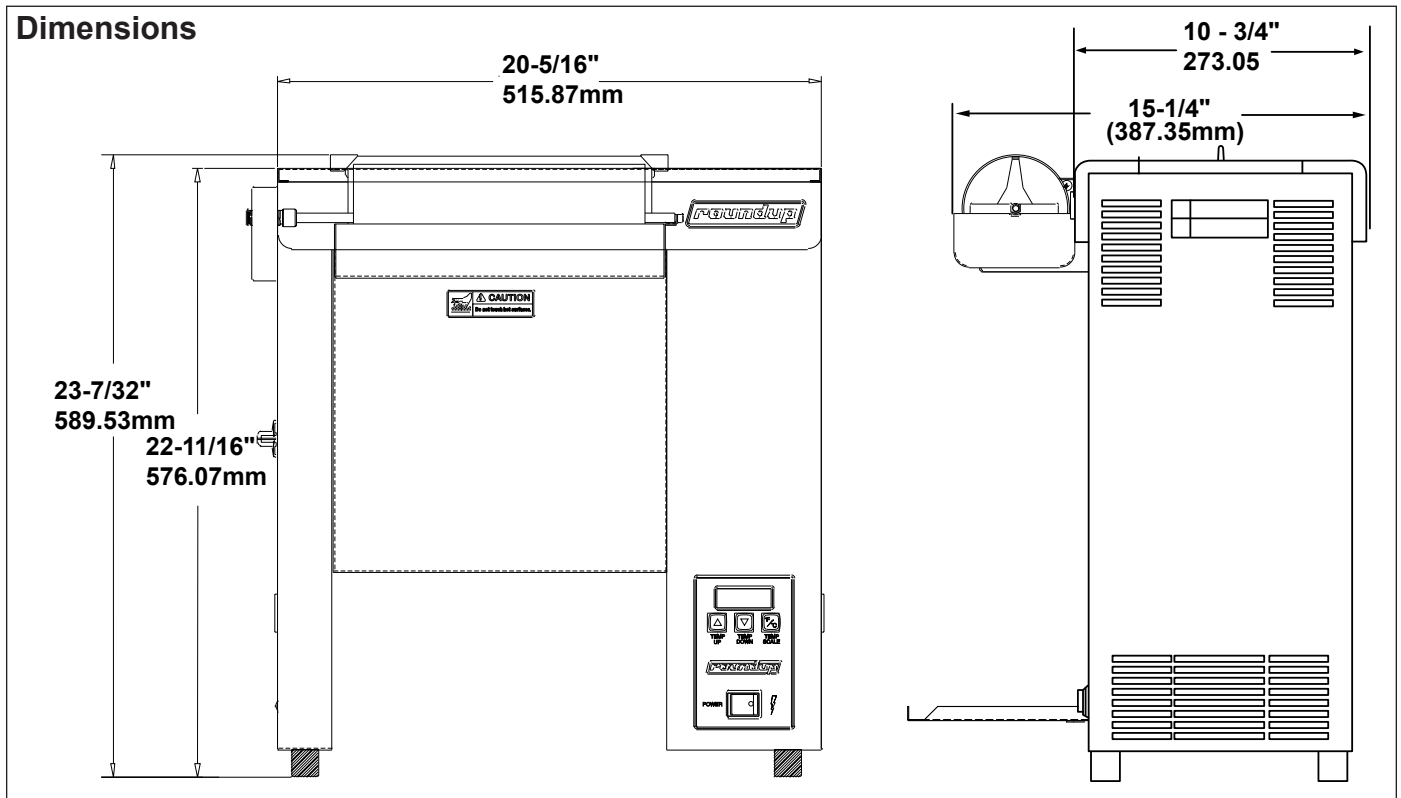
IMPORTANT! Keep these instructions for future reference. If the unit changes ownership, be sure this manual accompanies the equipment.

VERTICAL CONTACT TOASTER

SPECIFICATIONS

Electrical Ratings & Plug Configurations

Model & Mfg. Number	Volts	Watts	Amps	Hertz	Plug Description	Configuration
VCT-2000 Wide Mouth 9210127, 9210128, & 9210953	208	3291	15.8	60	6-20P, 20 Amp., 250 VAC., Right Angle	
VCT-2000 Wide Mouth 9210951	220~	3291	15.8	60	Pin & Sleeve Plug 30 Amp., 250 VAC	
VCT-2000 Wide Mouth 9210219	220-240~	3019-3593	13.7 - 14.9	50	Marechal Pin & Sleeve 32 Amp., 220-250 VAC	
VCT-2000 Wide Mouth 9210220	220-240~	3019-3593	13.7 - 14.9	50	IEC-309 32 Amp., 230 VAC, 3 Pin	
VCT-2000 Wide Mouth 9210221	220-240~	3019-3593	13.7 - 14.9	60	IEC-309 32 Amp., 230 VAC, 3 Pin	
VCT-2000 Wide Mouth 9210222	220~	3500	15.9	50	IEC-309 32 Amp., 230 VAC, 3 Pin	



VERTICAL CONTACT TOASTER

IMPORTANT SAFETY INFORMATION

In addition to the warnings and cautions in this manual, use the following guidelines for safe operation of the unit.

- Read all instructions before using equipment.
- For your safety, the equipment is furnished with a properly grounded cord connector. Do NOT attempt to defeat the grounded connector.
- Install or locate the equipment only for its intended use as described in this manual. Do NOT use corrosive chemicals in and/or on this equipment.
- Do NOT operate this equipment if it has a damaged cord or plug, if it is not working properly, or if it has been damaged or dropped.
- This equipment should be serviced by qualified personnel only. Contact Antunes Technical Service for adjustment or repair.
- Do NOT block or cover any openings on the unit.
- Do NOT immerse cord or plug in water.
- Keep cord away from heated surfaces.
- Do NOT allow cord to hang over edge of table or counter.
- Do NOT clean this appliance with a water jet.

The following warnings and cautions appear throughout this manual and should be carefully observed.

- Turn the unit off, wait for the cool-down procedure to complete its cycle, and disconnect the power cord before performing any service or maintenance on the unit.

NOTE: Turning off the power switch does NOT turn off all power to the unit. When the unit is plugged in and turned off, an LED light flashes to indicate that the power cord is plugged in.

⚠ WARNING ⚠

To avoid possible personal injury and/or damage to the unit, all inspections, tests, and repair of electrical equipment should be performed by **QUALIFIED SERVICE PERSONNEL**. The unit **MUST be completely shut down and unplugged** before any internal servicing, except when electrical tests are required. Use extreme care during electrical circuit tests. Live circuits will be exposed.

⚠ CAUTION ⚠

All electrical connections must be in accordance with local electrical codes and any other applicable codes.

⚠ CAUTION ⚠

Bread may burn. Therefore toasters must not be used near or below curtains or other combustible walls and materials. Failure to maintain safe operating distances may cause discoloration or combustion.

⚠ CAUTION ⚠

NEVER unplug the power cord while the unit is running! Use the proper shutdown procedure before unplugging the power cord.

⚠ WARNING ⚠

ELECTRICAL SHOCK HAZARD. FAILURE TO FOLLOW THE INSTRUCTIONS IN THIS MANUAL COULD RESULT IN SERIOUS INJURY OR DEATH.

- Electrical ground is required on this appliance.
- Do NOT modify the power supply cord plug. If it does not fit the outlet, have a proper outlet installed by a qualified electrician.
- Do NOT use an extension cord with this appliance.
- The toaster should be grounded according to local electrical codes to prevent the possibility of electrical shock. It requires a grounded receptacle with separate electrical lines, protected by fuses or circuit breaker of the proper rating.
- Check with a qualified electrician if you are unsure if the appliance is properly grounded.

INSTALLATION

Unpacking

1. Remove unit and all packing materials from shipping carton.
2. Open the included large box. It should contain the following:
 - Bun Chute (Figure 2)
 - Butter Wheel and Pan (Figure 2)
 - Two Release Sheets (Figure 2)
 - Platen Cleaning Tool
 - Owner's Manual
 - Maintenance Card
3. Remove all shipping tape and protective coverings from the unit and parts.

NOTE: Missing or damaged parts? Contact Antunes Technical Service at 1-877-392-7854 (toll free in the U.S.) or 630-784-1000.

Equipment Setup

Before placing the toaster into service, pay attention to the following guidelines:

- Make sure power to the unit is off and the toaster is at room temperature.
- Do NOT block or cover any openings on the unit.
- Do NOT immerse cord or plug in water.
- Keep cord away from heated surfaces.
- Do NOT allow cord to hang over edge of table or counter.
- Connect the unit to the proper power supply. Refer to the specification plate for proper voltage.

Assembling the Unit

NOTE: The factory has pre-installed a Release Sheet over the Platen (Figure 2). Verify that it is properly in place before proceeding.

CAUTION

Failure to use Release Sheets may result in damage to the unit and loss of warranty coverage.

INSTALLING BUTTER WHEEL ASSEMBLY

1. Remove Butter Wheel and Pan from box.
2. Install the Pan over the front edge of the Heat Shield and place the Butter Roller in Pan and engage into gear case (Figure 2).
3. Fill the Butter Pan with Butter before toasting.

INSTALLING THE BUN CHUTE

1. If the unit is on, be sure to put on heat resistant gloves.
2. Insert the Bun Chute through the front of the unit according to Figure 1.
3. Hang the back of the Bun Chute on the rear Conveyor Cover hinge. When properly installed, the Bun Chute supports will be flush against the front of the unit (Figure 1).

NOTE: You may need to stand to the side of the unit to guide the Bun Chute into place from the front and rear using both hands.

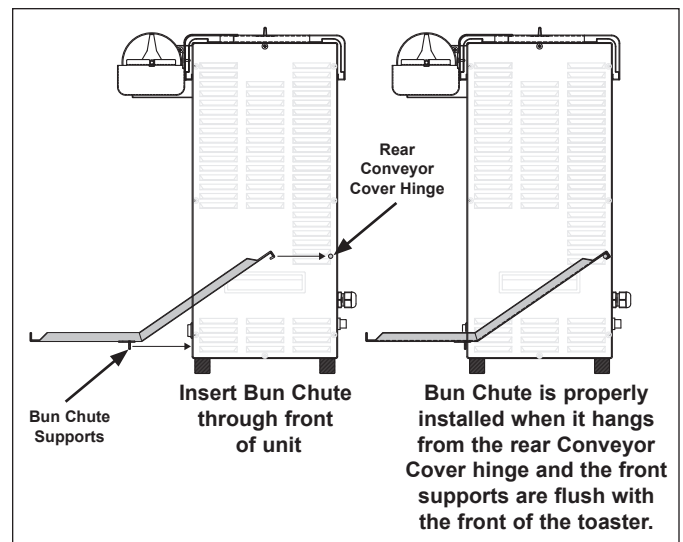


Figure 1. Installing Bun Chute

IMPORTANT: Make sure Heat Shield assembly is activating the Conveyor Interlock Switch (Figure 2). The conveyors will not rotate unless the Heat Shield is in place and Conveyor Interlock Switch is activated.

VERTICAL CONTACT TOASTER

INSTALLATION (continued)

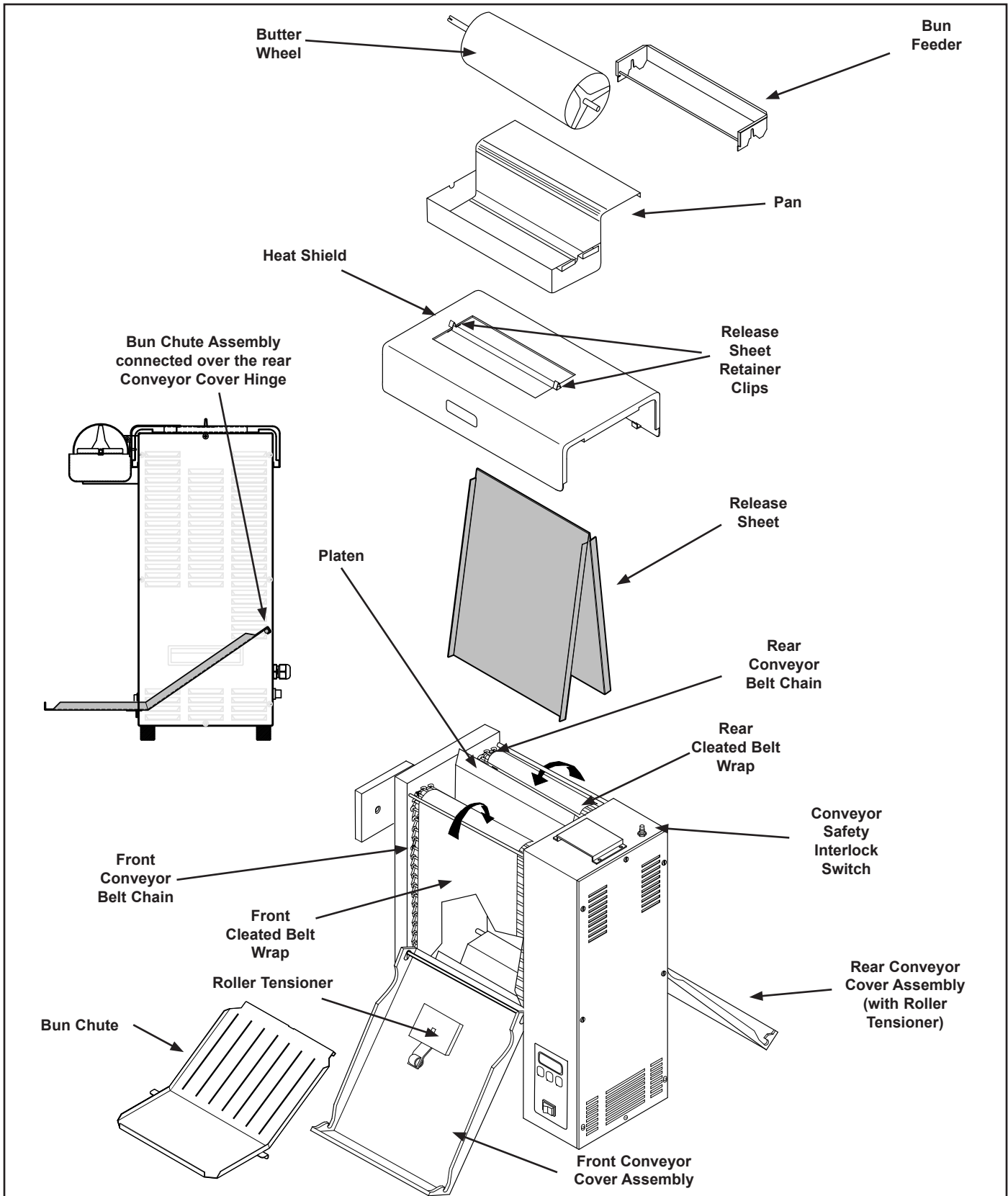


Figure 2. VCT-2000 Components

VERTICAL CONTACT TOASTER

OPERATION

Operating Instructions

1. Set the Bun Thickness Adjustment Controls (Figures 3 and 4) to desired setting.

NOTE: The McDonald's "Gold Standard" for toasting is the deciding factor on the finished product, not the Bun Thickness setting.

NOTE: The default Bun Thickness settings are 2 for Heels and C for Crowns, but settings are adjustable from 1-6 and A-F. It is acceptable to adjust the Bun Thickness setting as needed to achieve the desired quality toast and bun compression.

2. Turn the power on and allow the toaster to warm-up for 30 minutes before proceeding.
3. Fill the Butter Pan.

NOTE: The display (Figure 2) flashes "LO" during warm-up. "USE" appears when the toaster is ready for use.

4. Slide buns across the rotating Butter Wheel with the cut face down. Drop buns into the Bun Feeder. The cut sides of heel and crown must face each other and slide against the Release Sheet.
5. Toasted buns drop onto the Bun Chute (Figure 3).
6. Test at least 4 buns before putting the toaster into service.

Temperature Adjustments

RECOMMENDED TEMPERATURES

Manufacturing Number	Platen Recommended Temperature	Auxiliary Heater Recommended Temperature
9210127	505° F (263° C)	425° F (218° C)
9210128		
9210219		
9210220		
9210221		
9210222		
9210951 & 9210953	560° F (293° C)	425° F (218° C)

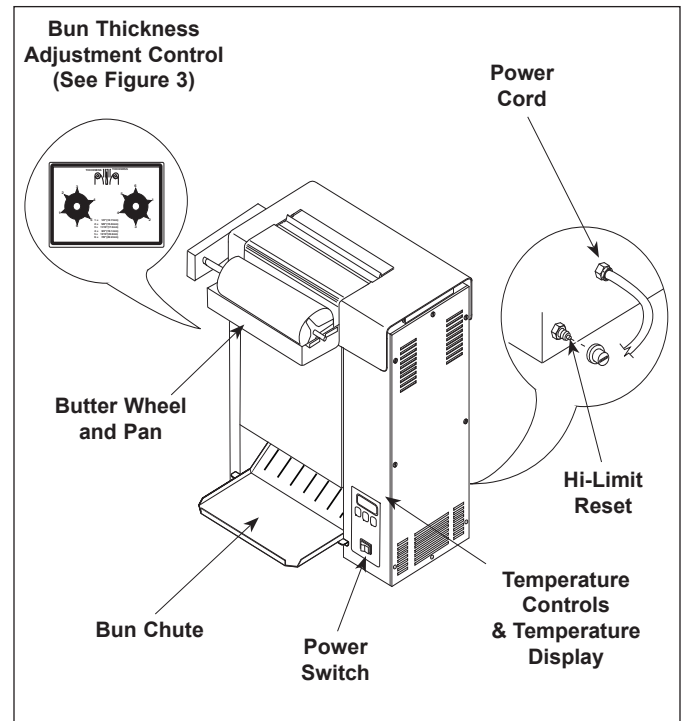


Figure 3. VCT-2000 Toaster

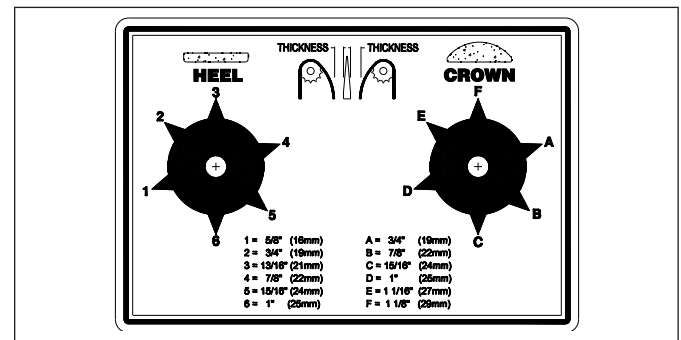


Figure 4. Bun Thickness Adjustment Controls

VERTICAL CONTACT TOASTER

OPERATION (continued)

TEMPERATURE CONTROL PANEL

To display the actual Platen temperature—providing it is over 440° F (227° C)—press the **TEMP UP** button.

To display the actual Auxiliary Air Heater temperature—providing it is over 360° F (182° C)—press the **TEMP DOWN** button.

To switch the temperature display between Fahrenheit (°F) and Celsius (°C), press and hold the **TEMP SCALE** button for 5 seconds.

PLATEN HEATER TEMPERATURE ADJUSTMENT

1. Press and hold both **TEMP UP** and **TEMP DOWN** buttons until the display flashes the Platen setpoint temperature, then release.
3. Press the **TEMP UP** and **TEMP DOWN** buttons to raise or lower the setpoint temperature..

NOTE: The maximum Platen setpoint temperature is 600° F (315° C).

NOTE: After 5 seconds of inactivity the display reverts back to the previous setpoint temperature.

4. Release the button when the desired setpoint temperature is displayed.

AUXILIARY AIR HEATER TEMPERATURE ADJUSTMENT

2. Press and hold both **TEMP UP** and **TEMP SCALE** buttons until the display flashes the setpoint temperature, then release.
3. Press the **TEMP UP** and **TEMP DOWN** buttons to raise or lower the setpoint temperature.

NOTE: The maximum Auxiliary Air Heater setpoint temperature is 400° F (204° C).

4. Release the button when the desired setpoint temperature is displayed.

NOTE: After 5 seconds of inactivity the display reverts back to the previous setpoint temperature.

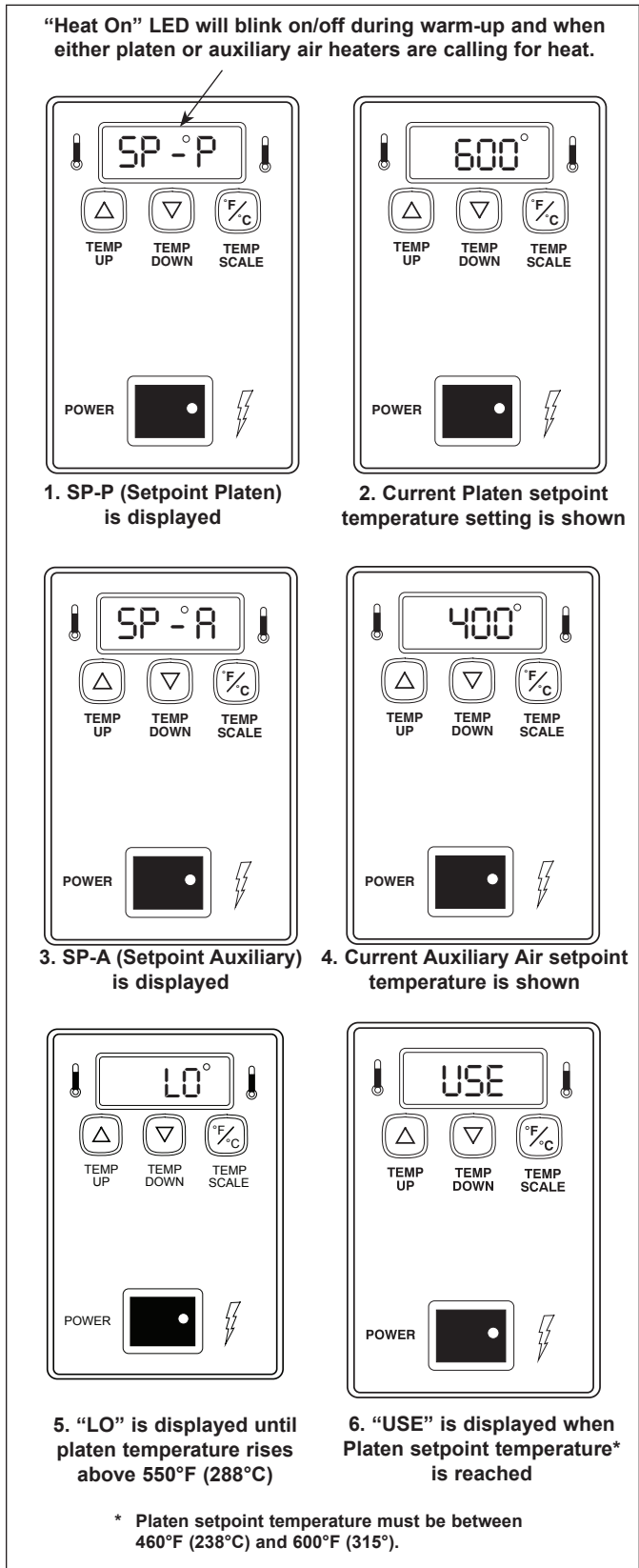


Figure 5. Temperature Power Up Sequence

OPERATION (continued)

Hi-Limit Reset Button

A Hi-Limit Control turns off power to the unit if it overheats. To reset the control, allow the unit to cool, then locate the Reset Button at the rear of the unit. Remove the black protective cap, press the Reset Button, and reinstall the protective cap (Figure 3).

NOTE: If the Hi-Limit requires continuous resetting, contact your maintenance person or Antunes Technical Service.

Fault Codes

FAULT CODE ON DISPLAY	POSSIBLE CAUSE(S)
Err 1	Failed Control Board (Call for Service)
Err 2	Failed Control Board (Call for Service)
Err 3	The programming dip switches were not adjusted upon installation of the universal control board. The dip switches must be adjusted to match the toaster Mfg #. Refer to document P/N 1011052 for specific settings.
Err 4	Platen Thermocouple is shorted to chassis ground (Call for Service)
Err 5	Platen Thermocouple is Loose or Disconnected or Open (Call for Service)
Err 6	Failed Control Board (Call for Service)
Err 7	Failed Control Board (Call for Service)
Err 8	Failed Control Board (Call for Service)
Err 9	The programming dip switches were not adjusted upon installation of the universal control board. The dip switches must be adjusted to match the toaster Mfg #. Refer to document P/N 1011052 for specific settings. NOTE: If the dip switches were adjusted correctly, then the AC Isolator Board or its wiring is faulty. (Call for Service)
Err 10	Failed Control Board (Call for Service)
CHEC	Ambient in electrical compartment has exceeded 140 F (60 C). Check for proper airflow. (Call for Service)

Figure 6. Fault Codes Table

VERTICAL CONTACT TOASTER

MAINTENANCE

⚠ WARNING ⚠

Turn the power off, unplug the power cord, and allow the unit to cool down for 30 minutes before performing any service or maintenance.

Daily Cleaning

For daily cleaning steps refer to preventative maintenance card PR 67 provided with this manual.

Replacing the Belt Wraps (Every 3–6 Months)

NOTE: Depending on toaster usage and how well they are cleaned daily, Belt Wraps should last between 3–6 months.

1. Turn the power off, unplug the power cord, and allow the unit to cool before proceeding.
2. Remove the Butter Wheel, Pan, and Heat Shield (Figure 2). Set the Bun Thickness Compression Knobs to 6 & 6.
3. Open both Conveyor Covers and pull the Belt Wrap Pin out of the zipper (Figure 7).
4. Remove and discard the old Belt Wrap(s).
5. Wipe the new Belt Wraps with a clean, sanitizer-soaked towel. Allow to air dry.
6. Install the new Belt Wraps around the Conveyor Belt Chains inside the Support Rods with the zipper flap exposed and hanging down (Figures 8 & 9).
7. Close the Conveyor Covers, set the Bun Thickness Compression Knobs back to their normal settings and reinstall the Heat Shield, Butter Wheel, and Pan.

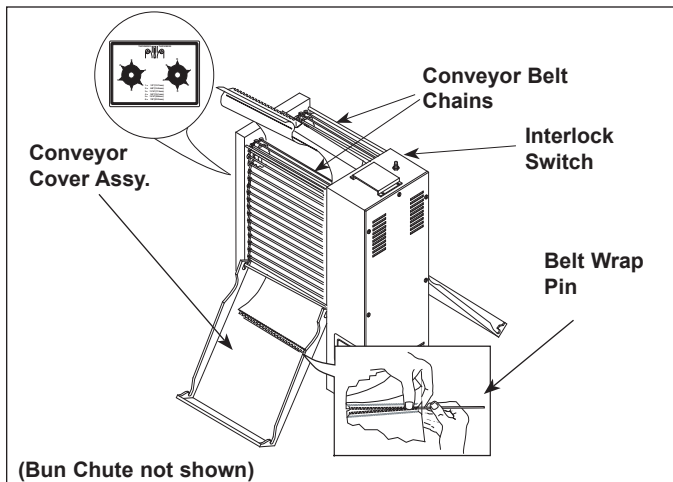


Figure 7. Removing Belt Wrap

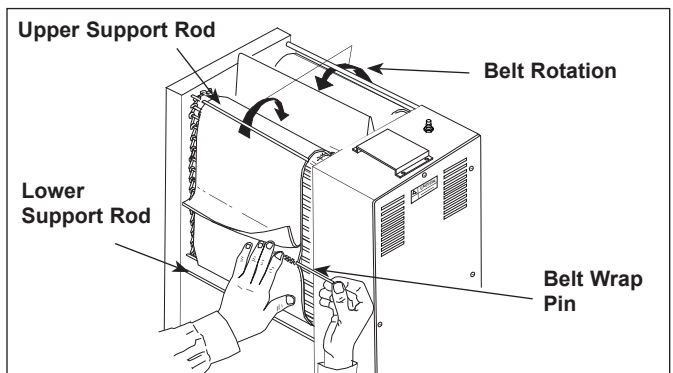


Figure 8. Installing Belt Wrap

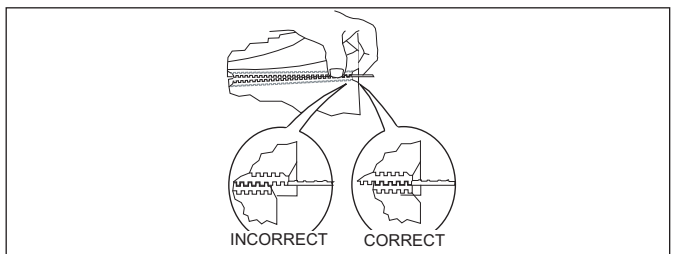


Figure 9. Aligning Belt Teeth

⚠ CAUTION ⚠

Align the ends of the Belt Wrap properly (Figure 0) or the Belt Wrap may be damaged.

⚠ CAUTION ⚠

Position the Belt Wrap **UNDER** the upper and lower support rods or damage to the unit may occur.

MAINTENANCE (continued)

Checking the Conveyor Belt Chains (Every 3–6 Months)

MEASURING CONVEYOR BELT CHAINS

1. Turn the unit off, unplug the power cord, and allow the unit to cool.
2. Remove the Bun Feeder, Butter Wheel, Pan, and Heat Shield (Figure 2). Set the Bun Thickness Compression Knobs to 6 & 6.
3. Open both Conveyor Covers.
4. Remove the Belt Wraps and set aside (Figures 7 & 8).
5. Facing the toaster, locate the approximate center-point of the Conveyor Belt Chain.
6. Pull the chain away from the edge of the toaster (Figure 10).
7. Stand a U.S. Dime on end between the frame and the chain (Figure 10).
8. If the gap is 2 times wider than the coin, remove links as described below.
9. Squeeze any two links together and unhook the links from each other (Figure 11). Needle-nose pliers may be used.

NOTE: There are two small 1/2" links on each side of the Conveyor Belt Chain. The rest are large 3/4" links.

10. Remove one 1/2" link from the chain.
11. Reassemble the chain onto the sprockets as described in the *Replacing Conveyor Belt Chains* section of this manual.
12. Measure the gap again with the coin. The coin should fit snugly between the chain and frame.
13. Check the opposite side of the toaster using the same steps.

NOTE: If the ends of the Conveyor Belt Chain cannot be connected, remove an additional small 1/2" link and install a large 3/4" link in its place.

REPLACING CONVEYOR BELT CHAINS

1. Turn the power off, unplug the power cord, and allow the unit to cool before proceeding.
2. Remove the Butter Wheel, Pan, and Heat Shield and set the Compression Control Knobs to 6 & 6.
3. Open both Conveyor Covers.
4. Remove both Belt Wraps and set aside.

5. Disconnect the Conveyor Belt Chain by squeezing any two links together and unhook both ends of one link (Figure 11). Repeat on other side.
6. Place the new chain on the top sprockets with hook ends down.

NOTE: The ends of the hooks must point down (Figure 11).

7. Wrap the chain around the top and lower sprockets. Hook both ends together. Repeat on other side.

NOTE: Install the Conveyor Belt Chains under the upper and lower Support Rods.

8. If the Belt Wraps are in good condition, reinstall. Otherwise install new Belt Wraps.
9. Close the Conveyor Covers, set the Bun Thickness Compression Knobs back to their normal settings and reinstall the Heat Shield, Butter Wheel, and Pan.

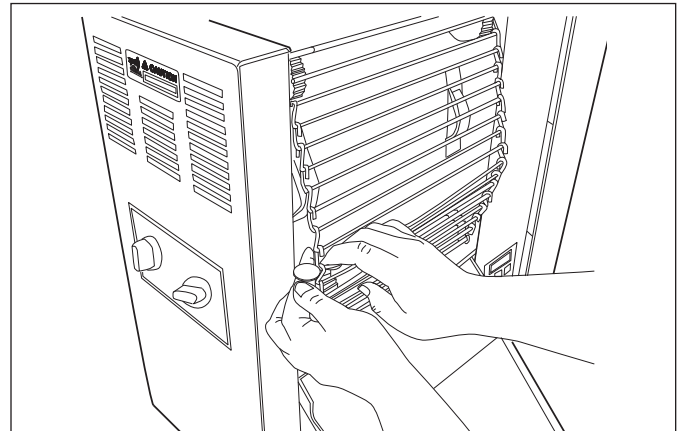


Figure 10. Measuring Conveyor Belt Chain

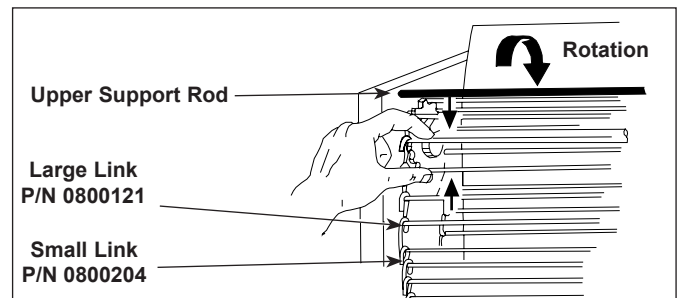


Figure 11. Removing Conveyor Belt Chain

VERTICAL CONTACT TOASTER

MAINTENANCE (continued)

Checking the Roller Tensioners (every 3–6 months)

MEASURING THE ROLLER TENSIONERS

1. Measure the Roller Tensioner on both inner Conveyor Covers (Figure 12) using a U.S. Nickel.
2. The space between the inner Conveyor Cover and bottom of the Tensioner wheel should be $13/16$ " (2.1 cm) or the height of a U.S. Nickel.
3. Adjust the tensioner as needed. Replace any damaged tensioner.

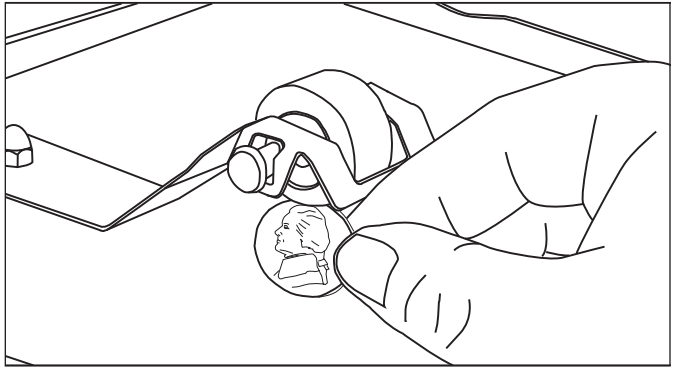


Figure 12. Measuring Roller Tensioner

REPLACING THE ROLLER TENSIONERS

1. Push down on retaining tab of the tensioner.
2. While keeping pressure on the retaining tab, slide the tensioner out of the retainer plate.
3. Replace the tensioner by sliding the new one into the retainer plate.

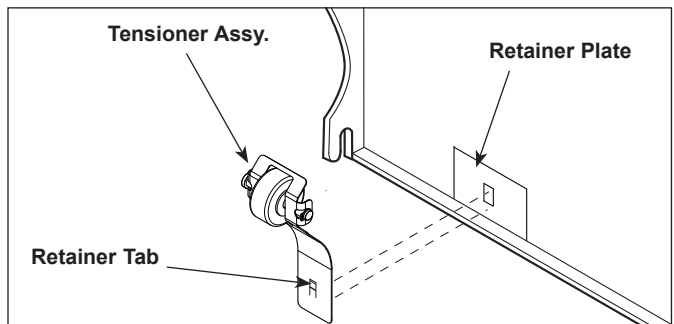


Figure 13. Replacing Roller Tensioner Assy.

VERTICAL CONTACT TOASTER

TROUBLESHOOTING

⚠WARNING⚠

To avoid possible personal injury and/or damage to the unit, inspection, test and repair of electrical equipment should be performed by qualified service personnel. The unit should be unplugged when servicing, except when electrical tests are required. Use extreme care during electrical circuit tests. Live circuits will be exposed.

Refer to the Maintenance section of this manual for assistance with many of the Corrective Actions listed.

Problem	Possible Cause	Corrective Action
Control Display Flashes "LO" continuously. Buns not toasting properly.	Platen temperature is below 440° F (226° C).	Allow the unit to warm up for 30 minutes and then recheck. If the Control Display still reads "LO", contact your maintenance person or Antunes Technical Service for service.
Control display flashes "LO" continuously. Buns Burn.	Failed Platen Thermocouple.	Contact your maintenance person or Antunes Technical Service for service.
	Failed Control Board	
Control Display flashes "PO" continuously.	The power to the unit is below 190 volts.	Turn the power off and then back on. If the display still shows "PO", check the power cord, plug, and outlet for damage. Reset the Circuit Breakers. Contact your maintenance person, Antunes Technical Service, or electrician for service.
	Failed Control Board.	
	Failed Transformer.	
Control flashes "CHEC" continuously.	Control Compartment temperature is above 140° F (60° C).	Verify side vents on toaster are unblocked and not near other heating appliances. If problem still persists, contact your maintenance person or Antunes Technical Service for service.
	Failed Cooling Fan.	
	Failed Control Board.	
Control Display flashes "HI" continuously. Buns burn.	Failed Platen Solid State Relay.	Contact your maintenance person or Antunes Technical Service for service.
	Failed Control Board.	
	Failed Platen Thermocouple.	
Control Display flashes "HI" continuously. Buns not toasting properly.	Loose Platen Thermocouple connection on Control Board or the Platen Thermocouple is open.	Re-secure the Platen Thermocouple connection to the Control Board. If the Control Display still reads "HI," check the Thermocouple for continuity. Contact your maintenance person or Antunes Technical Service for service.
	Failed Control Board.	
Control Display flashes "HI" & "LO" at cold start up, then "HI" & "USE" after 20–30 minutes.	Loose Auxiliary Thermocouple connection on Control Board or Thermocouple is open.	Re-secure the Auxiliary Thermocouple connection to the Control Board. If the Control Display still reads "HI" & "LO" or "HI" & "USE," check Thermocouple for continuity. Contact your maintenance person or Antunes Technical Service for service.
No Control Display.	Unit not plugged in.	Plug unit into the proper electrical outlet.
	Hi-Limit control has tripped.	Allow unit to cool and reset the Hi-Limit control. If it trips again, contact your maintenance person or Antunes Technical Service.
	Circuit Breakers turned off or tripped. Damaged electrical outlet, plug, or cord. Power Switch damaged.	Reset Circuit Breakers. If they trip again, check the cord, plug, and outlet for damage. Contact your maintenance person, Antunes Technical Service, or electrician.

VERTICAL CONTACT TOASTER

TROUBLESHOOTING (continued)

Problem	Possible Cause	Corrective Action
Conveyor does not turn.	Safety Interlock Switch is not activated.	Reposition the Heat Shield properly.
	Heat Shield is bent or damaged.	Replace Heat Shield.
	Damaged or Missing Roller Tensioner(s).	Adjust or replace Roller Tensioner(s).
	Conveyor Belt/Chain has stretched. Chain skipping on sprockets.	Measure and adjust the Conveyor Belt Chains.
	Motor Drive Chain came off Sprocket(s).	Reinstall Drive Chain.
	Drive Chain needs lubrication.	Lubricate chain.
	Drive Motor has overheated.	Allow unit to cool and check Conveyor(s) for obstructions or binding at sprockets. Measure and adjust Conveyor Belt(s).
	Drive Motor has failed.	Contact your maintenance person or Antunes Technical Service for service.
Buns not toasting properly	Compression Settings are incorrect.	Use the recommended settings. Set Heel to 2 and Crown to C.
	Temperature Setting is incorrect.	Verify that the Platen (SP-P) is set to 600°F (320°C) and the Auxiliary (SP-A) is set to 400°F (204°C). For making changes in the setpoint temperature, see the Installation section of this manual.
	Release Sheet is worn or needs cleaning (replace every 4–6 weeks.)	Clean or replace Release Sheet.
	Belt Wraps are worn or need cleaning (replace every 3–6 months).	Replace or clean Belt Wraps.
	Belt Wraps are not tacky/sticky.	
	Buns do not meet specifications.	Contact your bun supplier.
Toaster makes unusual sounds.	Conveyor Belt Wrap is installed incorrectly.	
	Belt Wrap Pin rubbing on housing.	Center the Pin in the Belt Wrap zipper.
	Roller Tensioner(s) bent or missing.	Measure, adjust, or replace the Roller Tensioner(s) as described in the Maintenance section of this manual.
	Conveyor Belt Chains have stretched and are too tight	Measure and adjust the Conveyor Belt Chains as described in the Maintenance section of this manual.
	Conveyor Belt Chains adjusted incorrectly.	
	Sugar and/or Carbon has accumulated inside the Conveyor Belt Wrap(s) and between the Conveyor Belt Chain(s) and Tensioner Slide Rail(s).	Remove Belt Wraps and clean Conveyor Belt Chain links just as you clean the Belt Wraps daily, and then clean the Slide Rails on the Tensioners. Then clean the Belt Wrap(s) on both sides before reinstalling.
	Motor Drive Chain needs lubrication.	Lubricate the Drive Chain carefully at least once a year.
	A Conveyor Shaft bearing is binding.	Contact your maintenance person or Antunes Technical Service for service.

VERTICAL CONTACT TOASTER

TROUBLESHOOTING (continued)

Problem	Possible Cause	Corrective Action
Crowns and/or Heels must be forced into the toaster. Buns sticking and burning.	Conveyor Belt Wraps are not tacky/sticky (replace every 3–6 months).	Clean or replace Belt Wraps.
	Belt Wraps are damaged (replace every 3–6 months).	Replace Belt Wraps.
	Release Sheet is worn or damaged (switch release sheets every 6 hours. Replace every 4–6 weeks).	Replace Release Sheet.
	Conveyor Belt Chains are skipping on Sprockets.	Measure and adjust the Conveyor Belt Chains.
	Safety Interlock Switch is not being activated by the Heat Shield.	Reposition Heat Shield.
		Heat Shield is damaged. Replace if necessary. If the Safety Interlock Switch is damaged, contact your maintenance person or Antunes Technical Service for service.
	Belt Wraps slipping over Conveyor Belt Chains.	Remove Belt Wraps and clean the Conveyor Belt Chain links and Belt Wraps.
	Roller Tensioner(s) damaged or missing.	Reinstall or replace Roller Tensioner(s).
	Drive Motor stalls intermittently.	Contact your maintenance person or an Antunes Technical Service for service.
	Compression Settings are incorrect.	Use the recommended settings. Set Heel to 2 and Crown to C.
Buns are not inserted into the toaster properly.	Buns must be inserted with the cut sides facing each other on the correct Heel or Crown side.	
New Conveyor Belt Wraps do not fit.	Belt Wraps not installed correctly.	Install Belt Wraps inside the Conveyor Support Rods with the zipper flap exposed and hanging down.
	Using incorrect or damaged Belt Wraps.	Replace with OEM P/N 7000416 only.

VERTICAL CONTACT TOASTER

REPLACEMENT PARTS

Item	Part No.	Description	Qty.
1	0011266	Conveyor Belt (Incl. Items below)	2
	0800204	1/2" Pitch Link, Small	2
	0800121	3/4" Pitch Link, Large	38
2	2150117	Idler Shaft	1
3	7000322	Conveyor Cover/Roller Tensioner Kit	2
4	0010475	Tensioner Assy. (Incl. #40, 76, & 85)	4
5	0800406	Rod, Conveyor Cover	4
6	7000207	Sprocket w/ Setscrew	8
7	7000199	Spacer Kit (Pack of 2)	2
8	0011444	Control Housing Cover Assy.	1
9	2150118	Drive Shaft	3
11	7001190	Control Board Repl. Kit	1
	7001224	Control Board Repl. Kit (Mfg. No. 9210951 & 9210953 Only)	1
12	7000296	Ball Bearing (Pack of 2)	1
16	7000167	Bearing & Retainer Kit	6
16A	7000224	Bearing & Retainer Kit (Incl. 6 of #16)	1
17	2150181	Drive Sprocket	2
18	2150187	Drive Chain	1
19	0011299	Idler Sprocket & Bearing	1
20	0011300	Bracket, Idler Sprocket Assy. (Incl. #19, 87, 89, 90, & 91)	1
21	0503589	Bracket, Motor Mounting	1
22	7000263	Gear Motor Replacement Kit	1
23	2150132	Sprocket w/Setscrew, Motor (Mfg. No. 9210127 & 9210128)	1
	2150129	Sprocket w/Setscrew, Motor (Mfg. No. 9210219, 9210220, 9210222)	1
	2150112	Sprocket, 25B28 5/16 bore (Mfg. No. 9210951 & 9210953)	1
24	7000882	Rocker Switch Kit	1
25	2150179	Drive Sprocket, Rear	1
26	4050230	Relay, Solid State (Mfg. No. 9210127, 2 9210128, 9210951 & 9210953)	2
	4050231	Relay, Solid State (Mfg. No. 9210219 2 & 9210220)	2
27	4010187	Transformer	1
28	7000416	Conveyor Belt Wrap (Pack of 2)	1
29	0013373	Roller Tensioner Assy.	2
30	0503496	Tensioner Bracket, Right	2
31	0503497	Tensioner Bracket, Left	2
32	1001006	Label, Control	1
33	1001144	Label, Dial Compression	1
34	2100253	Knob, Control	2
35	0013105	End Housing Cover Assy.	1
36	4050214	Thermocouple Assy.	1
37	0011572	End Housing Assembly (Mfg. No. 9210127, 9210128, 9210951, & 9210953)	1
	0021170	Weldment, End Housing (Mfg. No. 9210219 & 9210220)	1
38	7001166	Release Sheet (Pack of 3)	-
	7001167	Release Sheet (Pack of 10)	-
39	0021169	Control Housing	1
40	7000121	Slide Rail Kit (Includes 2 Slide Rails for tensioners)	2

Item	Part No.	Description	Qty.
41	0021207	Conveyor Cam	2
42	7000176	Thermocouple Retainer Kit	2
43	4030332	High Limit Control	1
44	2150117	Idler Shaft Assy. (Top, Front)	1
45	0503455	Tension Spring, Inner	4
46	0503590	Bracket, Motor	1
47	0700580	Wire Set (not shown) (Mfg. No. 9210127 & 9210128)	1
	0700651	Wire Set (not shown) (Mfg. No. 9210219 & 9210220)	1
	7000463	Replacement Power Cord (Mfg. No. 9210951)	1
48	0022096	Bun Chute (Mfg. No. 9210127, 9210128, 9210951, 9210953)	1
	0503624	Bun Chute (Mfg. No. 9210219 & 9210220)	1
49	4030349	Heating Element 675W/208 (Mfg. No. 9210127, 9210128, 9210951, & 9210953)	2
	4030348	Auxiliary Heater, 675W/208V (Mfg. No. 9210219 & 9210220)	2
	4030465	Heating Element 800W/200V (Mfg. No. 9210222 only)	2
50	7000165	Auxiliary Thermocouple Kit	1
51	7000288	Platen Kit 1900W/230V (Mfg. No. 9210127, 9210128, 9210951, & 9210953)	1
	7000289	Platen Kit 1900W/230V (Mfg. No. 9210219 & 9210220)	1
53	0503359	Bracket, Relay (Mfg. No. 9210127, 9210128, 9210951, & 9210953)	1
	0504067	Bracket, Relay (Mfg. No. 9210219 & 9210220)	1
54	0503150	Heater Clip	2
55	303P127*	Hinge Pin, Belt Wrap	2
56	4060355	Terminal Block	1
57	0503533	Bracket, Auxiliary Thermocouple	1
60	0400315	Strain Relief, Domestic (Incl. #63)	1
62	0500464	Retainer, Bearing	2
63	040P138*	Locknut, 1/2"	1
64	0011793	Heat Shield Assy.	1
65	325P163*	Setscrew, 1/4-28 x 5/16"	8
66	1001192*	Label, Caution Hot	1
67	308P203*	Screw #8-32 x 3/8 w/ Int Tooth Wshr	4
68	304P105*	Nut, #4-40, "KEPS"	4
69	406P107*	Cable Tie	1
70	308P143*	Nut, #8-32, "KEPS"	6
71	310P109*	Screw, Hex, #08-32 x 3/4"	4
72	310P157*	Washer, #10	6
73	308P101*	Nut, #8-32	3
74	306P101*	Nut, Hex, #6-32	2
75	306P123*	Screw, #6-32 x 7/8"	2
76	308P145*	Nut, Hex Acorn, #8-32	10
77	100P900*	Label, Service	1
78	325P104*	Washer, 1/4"	4
79	325P109*	Screw, 1/4-20 x 1/2"	4
80	308P124*	Screw, 1-Way, #8-32 x 1/2"	1

VERTICAL CONTACT TOASTER

REPLACEMENT PARTS (continued)

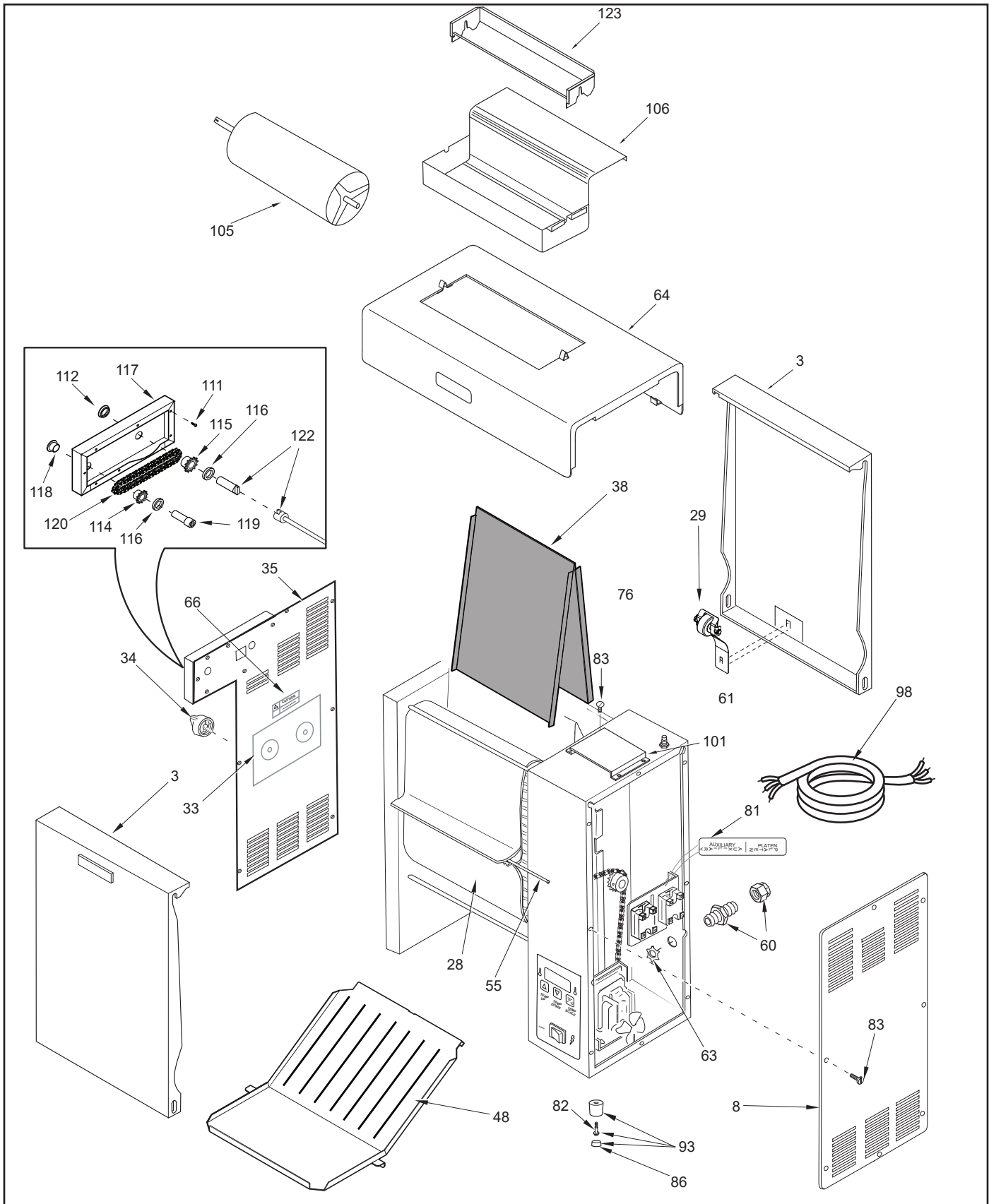
Item	Part No.	Description	Qty.
81	10P1022*	Label, Heaters	1
82	310P136*	Screw, #10-32 x 1-1/4"	4
83	308P133*	Screw, #8-32 x 1/4"	1
84	308P157*	Screw, Tap, #8-32 x 3/8"	20
85	308P181*	Screw, Flat Hd., #8-32 x 3/8"	4
86	218P145*	Cover, Leg, Bumper	4
87	331P103*	Shoulder Bolt, 5/16-18 x 1"	1
88	306P105*	Screw, #6-32 x 1/2"	8
89	331P106*	Lockwasher, 5/16"	1
90	212P118*	Flat Washer, 5/16"	1
91	331P101*	Nut, Hex, 5/16-18	1
92	300P102*	Nut, Tinnerman	2
93	210K230	Bumper, Recess Leg, 1" (Qty. of 4)	1
94	0503495	Retainer, Tensioner Bracket, RH	1
95	0503507	Retainer, Tensioner Bracket, LH	1
96	2100259	Slide Bar	4
97	4010107	Interlock Switch	1
98	0700737	6-20P 20 Amp., 250 V Right Angle (Mfg. No. 9210127, 9210128 & 9210953)	1
	0700688	Power Cord Marechal Pin & Sleeve 32 Amp., 220-250 VAC (Mfg. No. 9210219)	1
	0700588	IEC-309 32 Amp., 230 VAC, 3 Pin (Mfg. No. 9210220, 9210221, & 9210222)	1
	7000463	Replacement Power Cord Pin & Sleeve Plug 30 Amp., 250 VAC	1

Item	Part No.	Description	Qty.
		(Mfg. No. 9210951)	
99	306P104*	Screw, #6-32 x 1/4"	6
100	7000913	Fan Kit	1
101	0503775	Duct, Fan	1
103	2100230	Leg Spacers	4
104	4060374	Ground Lug	1
105	0021320	Butter Wheel Roller	1
106	0506867	Butter Pan	1
111	308P157	Screw, #8-32 x 3/8"	7
112	2150204	Bearing, Shaft, 1/2"	4
114	2150212	Sprocket, 12 Tooth	1
115	2150214	Sprocket, 25B30 1/2" Bore	1
116	2120149	Spacer, Nylon	2
117	0503891	Housing	1
118	0400295	Plug, Pry Out	1
119	0011553	Shaft Assembly	1
120	2150401	Chain Drive, 56 Links	1
122	7000692	Shaft Coupling Kit (Incl. Items Below)	1
	2150201	Shaft, Drive	1
	2150202	Coupler	1
123	0011792	Bun Feeder Assy.	1
124	0507322	Platen Cleaning Tool (not shown)	1
125	7001091	Label Replacement Kit French Canadian (Mfg. No. 9210128 only - not shown)	1

*** Sold only as packages of 10.**

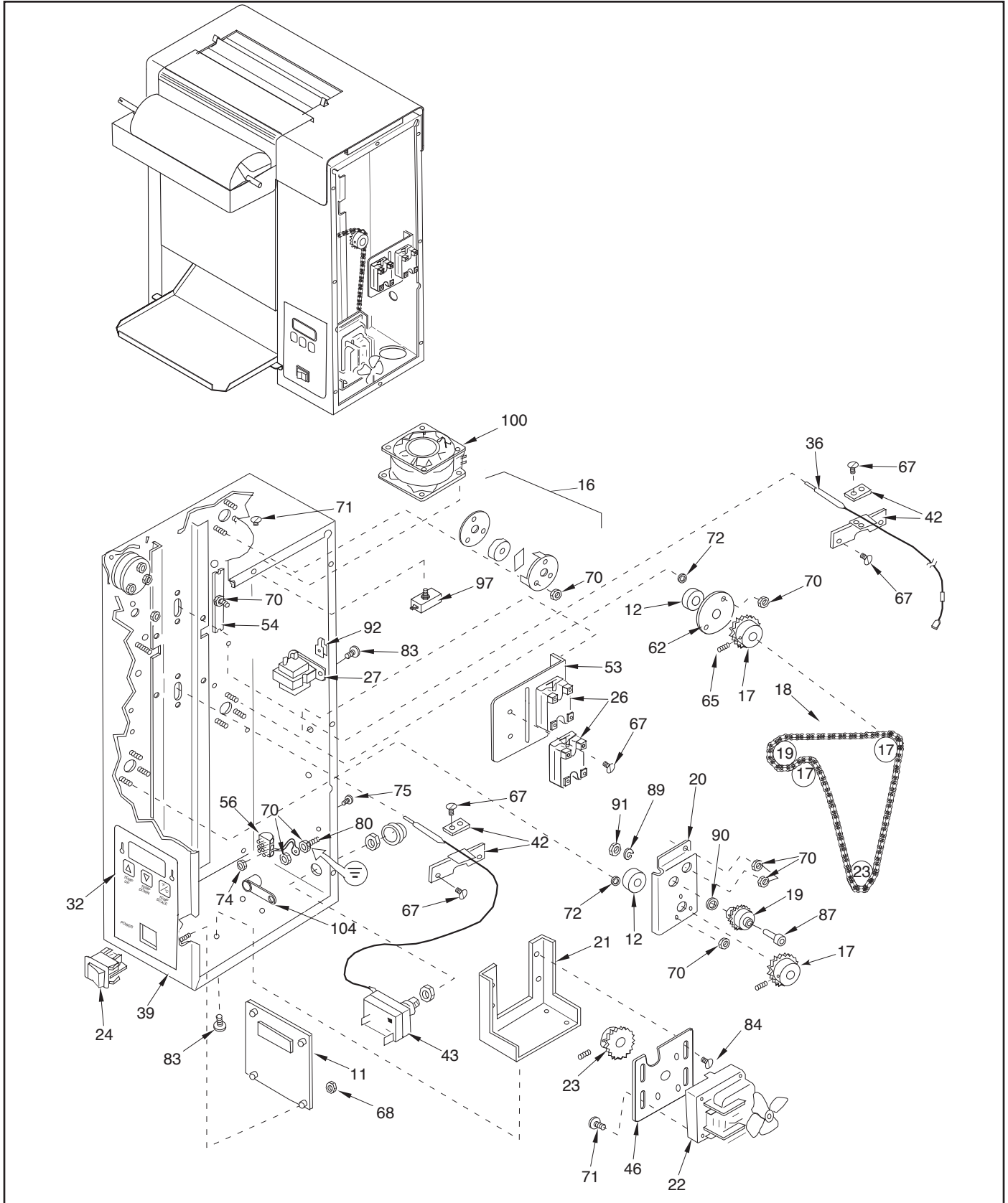
VERTICAL CONTACT TOASTER

REPLACEMENT PARTS (continued)



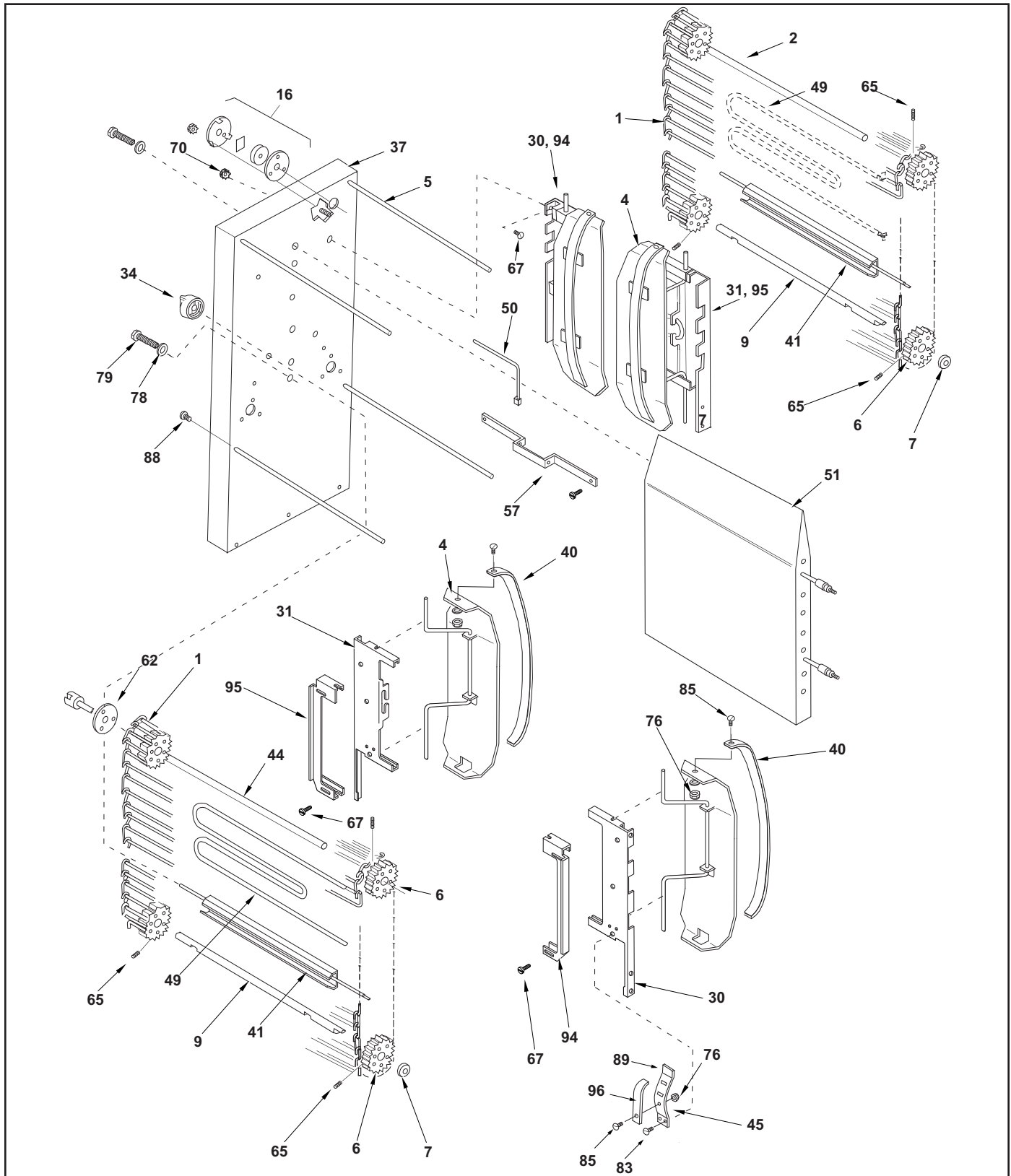
VERTICAL CONTACT TOASTER

REPLACEMENT PARTS (continued)



VERTICAL CONTACT TOASTER

REPLACEMENT PARTS (continued)

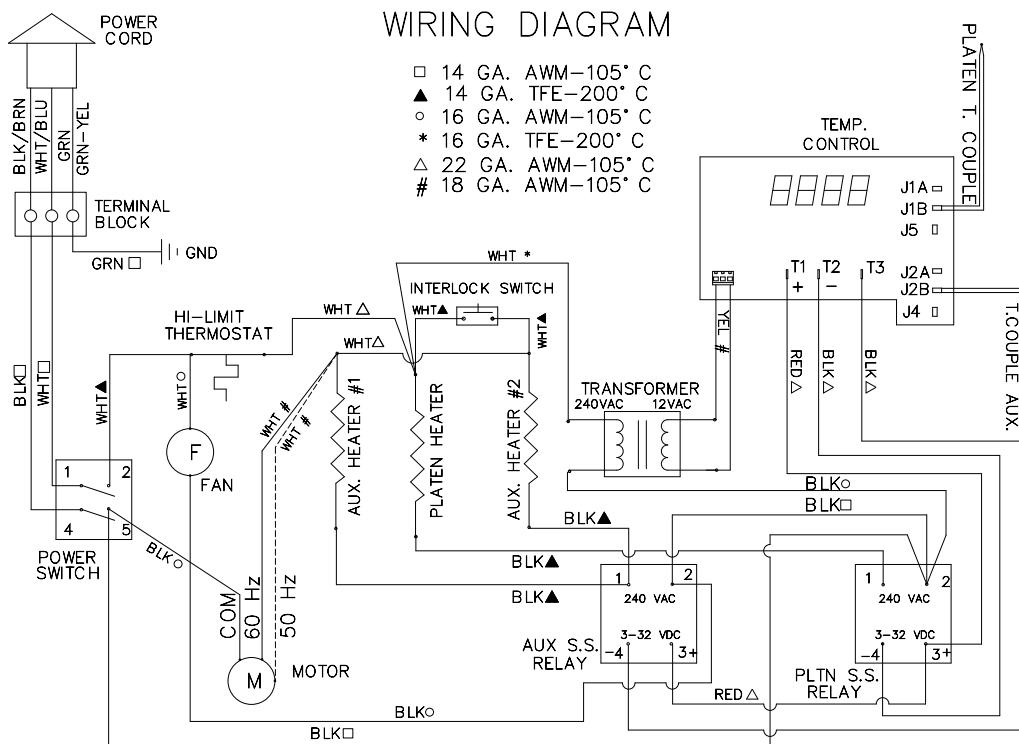


VERTICAL CONTACT TOASTER

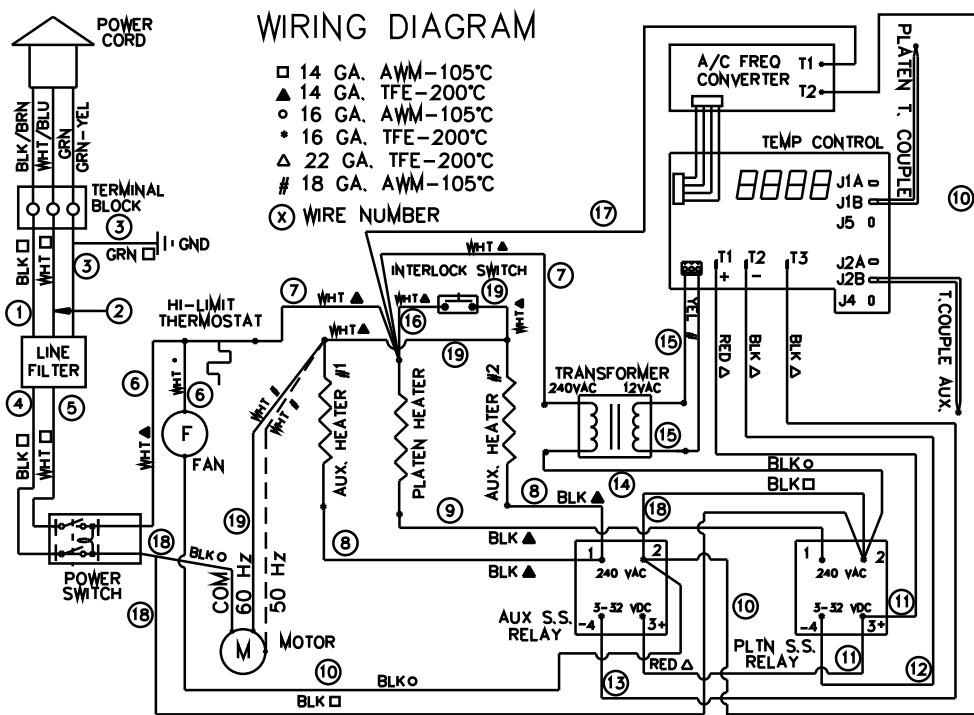
WIRING DIAGRAM

Pictorial Wiring Diagram

Applies to
Mfg. No.
9210127
9210128
9210951
9210953



Applies to
Mfg. No.
9210219
9210220
9210221
9210222





Antunes

Corporate Headquarters

Carol Stream, Illinois

Phone: +1 (630) 784-1000

Toll Free: +1 (800) 253-2991

Fax: +1 (630) 784-1650

China Facility

Suzhou, China

Phone: +86-512-6841-3637

Fax: +86-512-6841-3907