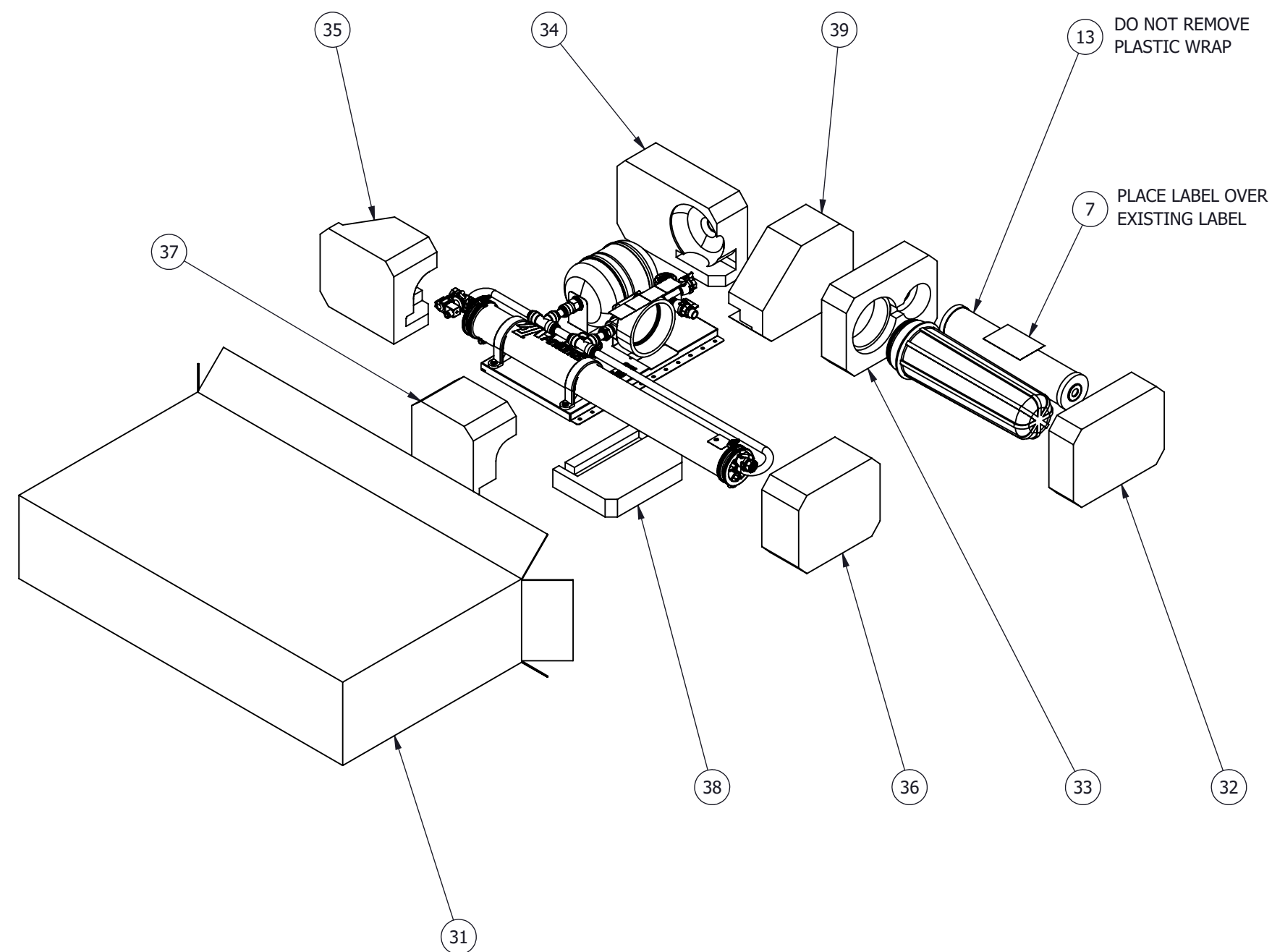


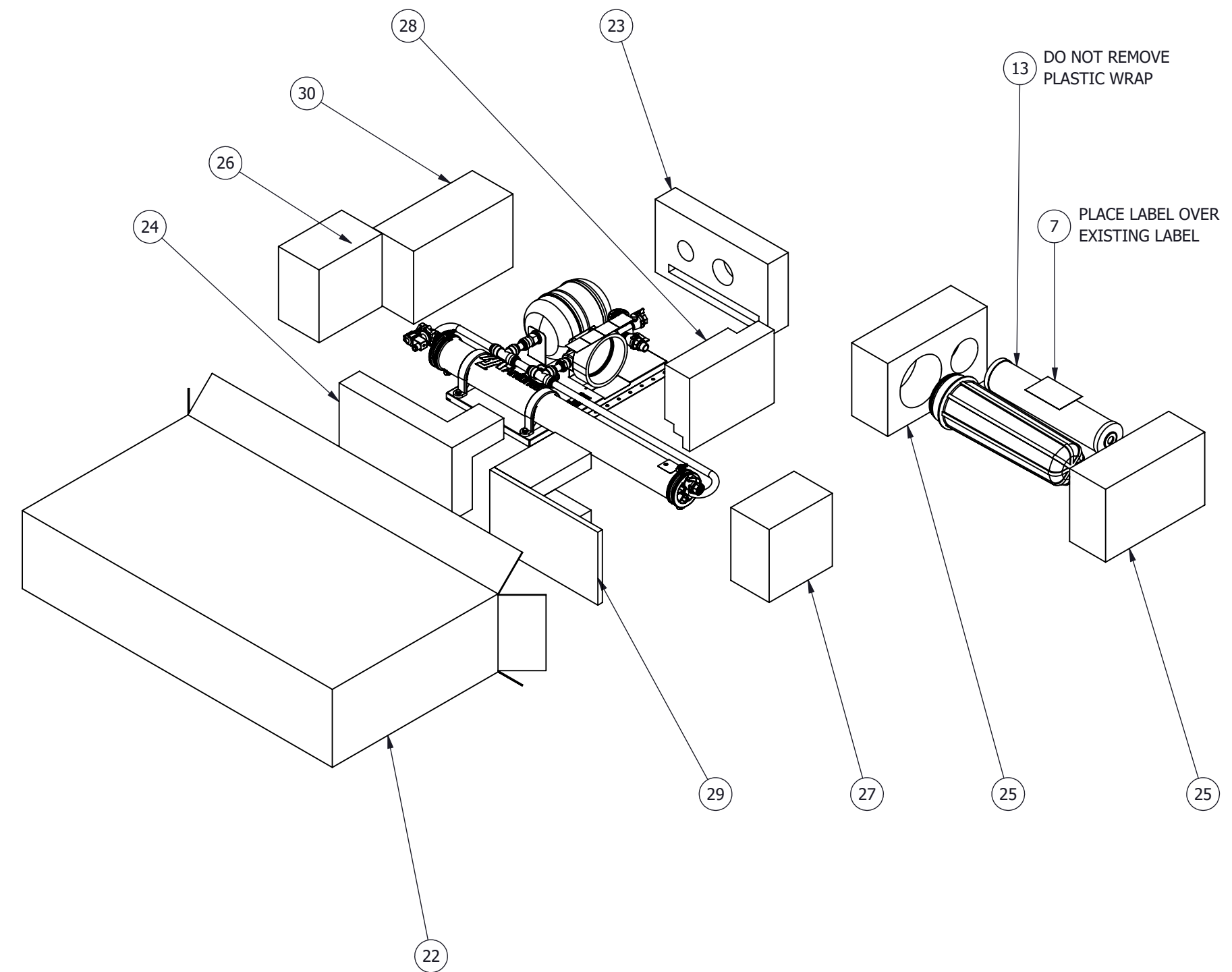
ITEM	PART NO	DESCRIPTION	QTY.
1	0012146	ASSY, ADAPTER 24VDC	1
2	0013993	MAIN ASSY, VZN 541VE	1
3	0505871	WALL BRACKET	1
4	1001133	LABEL, INLET	1
5	1001134	LABEL, PERMEATE	1
6	1001135	LABEL, DRAIN	1
7	1001545	LABEL, RPLCMNT HIGH CAP CARBON ELEMENT	1
8	1001674	LABEL, MULTI-LINGUAL, 7001911 REPLACEMENT	1
9	1002749	LABEL, ANTUNES LOGO 2.86" X 9.97"	1
10	1031492	SPEC LABEL, #9710111, ENG	1
11	1250362	MAILER, PADDED SELF-SEALING	1
12	2090157	CARTRIDGE, L-440	1
13	2090201	CARBON BLOCK, HIGH CAPACITY	1
14	2140144	TAPE, PIPE THREAD, TEFLON	A/R
15	2140153	LUBRICANT, HIGH VACUUM GREASE	A/R
16	2180611	WRENCH, FILTER, BB, 10/20" HSG, SOLE AQUA	1
17	2190167	GARDEN HOSE ADAPTOR, 3/4" NPT X 3/4" GHT	1
18	5126009	POLYBAG (9" X 12") 2MIL	1
19	7000733	GLOVE AND STICKER KIT	1
C1	20	1001567 LABEL, NSF CL-STD #42 & 53	1
C1	21	1013008 OWNER'S MANUAL	1
C1	22	1250658 CARTON BOX, VZN-541V(SZ ONLY)	1
C1	23	1260601 FOAM INSERT, EPE(SZ ONLY)	1
C1	24	1260602 FOAM INSERT, EPE(SZ ONLY)	1
C1	25	1260603 FOAM INSERT, EPE(SZ ONLY)	2
C1	26	1260604 FOAM INSERT, EPE(SZ ONLY)	1
C1	27	1260605 FOAM INSERT, EPE(SZ ONLY)	1
C1	28	1260606 FOAM INSERT, EPE(SZ ONLY)	1
C1	29	1260624 FOAM INSERT, EPE(SZ ONLY)	1
C1	30	1260625 FOAM INSERT, CELLULAR BOARD(SZ ONLY)	1
C1	31	1250664 CARTON BOX, VZN-541V	1
C1	32	1260629 INSERT, FOAM, VZN-541V, CARBON/FILTER HSG, BTM	1
C1	33	1260630 INSERT, FOAM, VZN-541V, CARBON/FILTER HSG, TOP	1
C1	34	1260631 INSERT, FOAM, VZN-541V, TANK HSG, TOP CORNER	1
C1	35	1260632 INSERT, FOAM, VZN-541V, UF HSG, DRAIN ENCAP	1
C1	36	1260633 INSERT, FOAM, VZN-541V, UF HSG, INLET ENCAP	1
C1	37	1260634 INSERT, FOAM, VZN-541V, UF HSG, MID SECTION	1
C1	38	1260327 FOAM INSERT, BACK PLATE, LEFT	1
C1	39	1260329 FOAM INSERT, BACK PLATE, RIGHT	1
D1	40	1011559 FLUSH NOTICE VZN	1

- NOTES:
- ASSEMBLE PARTS AS SHOWN.
 - RECORD ITEM 12 SERIAL NUMBER ON TEST PROCEDURE SHEET BEFORE INSTALLING INTO STAINLESS STEEL HOUSING.
 - REMOVE STAINLESS STEEL HOUSING CLAMP AND ENDCAP AND INSERT ITEM 12.
 - LUBRICATE ENDCAP O-RINGS WITH ITEM 15.
 - INSERT LUBRICATED ENDCAP INTO STAINLESS STEEL HOUSING AND SECURE WITH ENDCAP MOUNTING HARDWARE.
 - APPLY ITEM 14 TO ITEM 17 AND INSTALL INTO ITEM 2 AS SHOWN.
 - ON ITEM 2 ENSURE THE PERMEATE TANK AIR CHARGE IS SET TO 28-31 PSI USING A PRESSURE GAUGE.
 - ENSURE ALL BALL VALVES ON ITEM 2 ARE IN THE CLOSED POSITION PRIOR TO PACKAGING THE SYSTEM.
 - PLACE OWNER'S MANUAL ITEM 21 INTO POLYBAG ITEM 18 AND PLACE INTO PADDED ENVELOPE ITEM 11.
 - PLACE ITEM 1, 3, 18, 19 INTO ITEM 11.
 - PRINT FLUSH NOTICE 1011559 ON 8.5x11" IN EITHER YELLOW OR ORANGE PAPER, THEN TAPE FLUSH NOTICE ONTO THE MIDDLE OF THE ENVELOPE 1250362 AS SHOWN.

UNLESS OTHERWISE SPECIFIED: INTERPRET DIMENSIONS AND TOLERANCES PER ASME Y14.5-2009 ALL DIMENSIONS: INCH [mm] TOLERANCES: FRACTIONS: ±1/32" [8mm] DECIMAL .00 ±.01" [.25mm] .000 ±.005" [.125mm] ANGULAR: ±1°		DRAWN BY: RC	APVD BY:				
DATE: 06/28/19		DATE: 7/15/2018					
REV		DATE	PCO NO.	DESCRIPTION	BY	PART DESCRIPTION: VZN-541VE SYSTEM MATERIAL SPECIFICATION: SEE BOM	SHEET 1 OF 2
D	11/11/19	PC100125	D1 ADDED FLUSH NOTICE 1011559, D2 ADDED NOTE	KR			
C	06/28/19	PC-14371	C1 ADD THE PACKAGING ITEMS & MANUAL & LABELS; C2 UPDATE THE NOTES; DELETE THE PARTS #2190144 & #2190135 & #2190184 & #2190164	RC			
THE INFORMATION AND DESIGNS CONTAINED IN THIS DRAWING ARE CONFIDENTIAL AND THE PROPRIETARY PROPERTY OF A.J. ANTUNES & CO. NEITHER THIS DESIGN NOR ANY INFORMATION CONTAINED HEREIN MAY BE REPRODUCED OR DISCLOSED TO OTHERS WITHOUT THE EXPRESS WRITTEN CONSENT OF A.J. ANTUNES & CO.		DO NOT SCALE DRAWING		THIRD ANGLE PROJECTION	SIZE: SCALE: PART NUMBER: c 1:8 9710111	REV: D	



CS SEALED AIR FOAM



SZ EPE FOAM

UNLESS OTHERWISE SPECIFIED: INTERPRET DIMENSIONS AND TOLERANCES PER ASME Y14.5-2009 ALL DIMENSIONS: INCH [mm]				DRAWN BY: RC	APVD BY:	
TOLERANCES: FRACTIONS: ±1/32" [8mm] DECIMAL .xx ±.01" [.25mm] .xxx ±.005" [.125mm] ANGULAR: ±1°				DATE: 7/15/2018	DATE:	
D	11/11/19	PC100125	D1 ADDED FLUSH NOTICE 1011559, D2 ADDED NOTE	KR	PART DESCRIPTION: VZN-541VE SYSTEM	
C	06/28/19	PC-14371	C1 ADD THE PACKAGING ITEMS & MANUAL & LABELS; C2 UPDATE THE NOTES; DELETE THE PARTS #2190144 & #2190135 & #2190184 & #2190164	RC	MATERIAL SPECIFICATION: SEE BOM	
REV	DATE	PCO NO.	DESCRIPTION	BY	SIZE: SCALE: PART NUMBER:	
					c	1:8 9710111
THE INFORMATION AND DESIGNS CONTAINED IN THIS DRAWING ARE CONFIDENTIAL AND THE PROPRIETARY PROPERTY OF A.J. ANTUNES & CO. NEITHER THIS DESIGN NOR ANY INFORMATION CONTAINED HEREIN MAY BE REPRODUCED OR DISCLOSED TO OTHERS WITHOUT THE EXPRESS WRITTEN CONSENT OF A.J. ANTUNES & CO.				 DO NOT SCALE DRAWING THIRD ANGLE PROJECTION	REV: D	

SHEET 2 OF 2