

**CN-5-1
I/O CONNECTOR**

PIN#	FUNCTION	SIGNAL
PIN1	IN-COM	0101
PIN2	FWR	IN0 0/00
PIN3	REV	IN1 0/01
PIN4	STOP	IN2 NDT USED
PIN5	M0	IN3 0/03
PIN6	M1	IN4 0/02
PIN7	ALARM RESET	IN5 0/08
PIN8	FREE SYGNAL	IN6 NDT USED
PIN9	COM	NDT USED
PIN10	TH	NDT USED
PIN11	TH	NDT USED
PIN12	VH	NDT USED
PIN13	VM	NDT USED
PIN14	VL	NDT USED
PIN15	SPEED OUT+	OUT+ NDT USED
PIN16	SPEED OUT-	OUT- NDT USED
PIN17	ALARM OUT+	OUT+ 0110
PIN18	ALARM OUT-	OUT- I/09

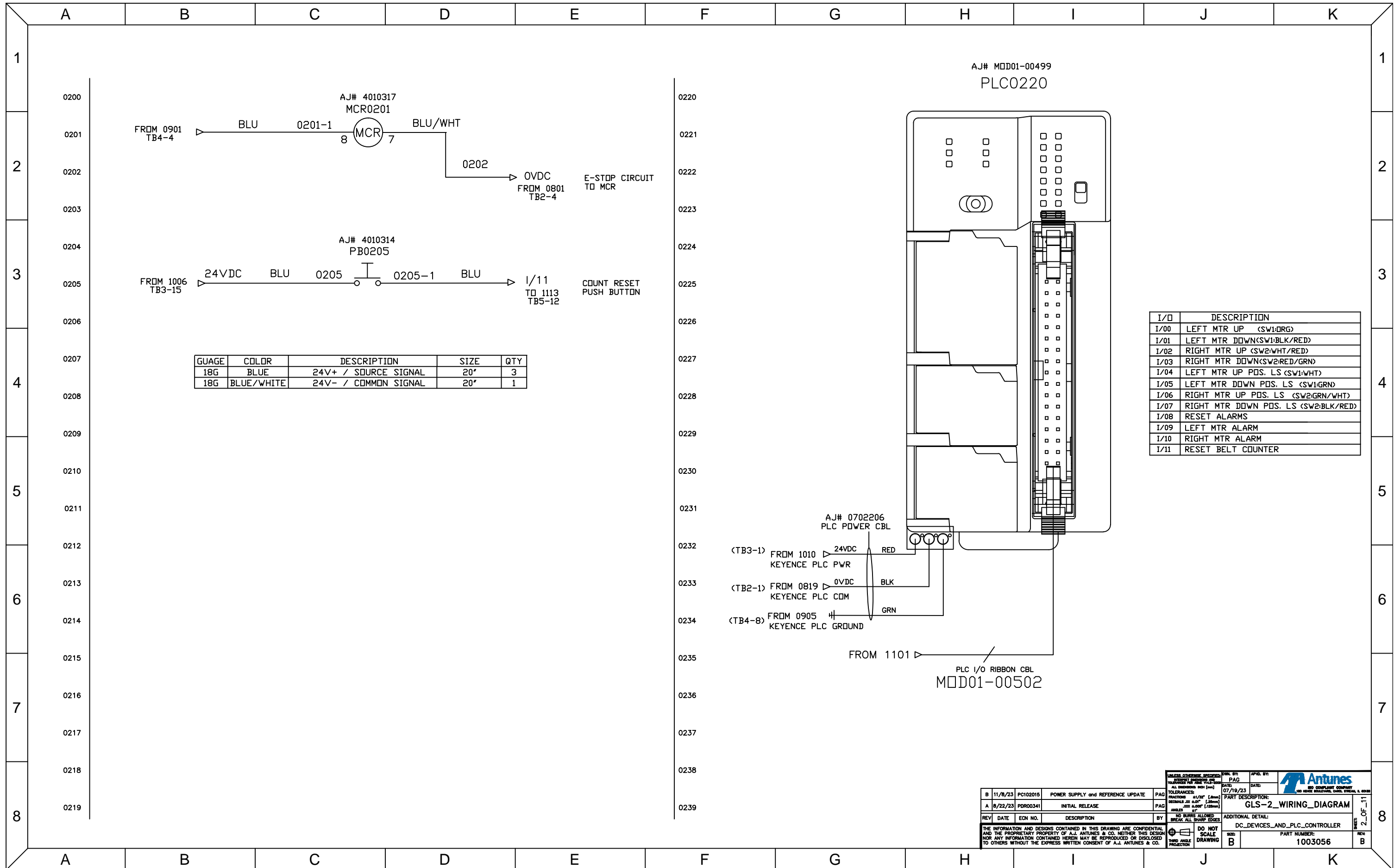
**CN-5-2
I/O CONNECTOR**

PIN#	FUNCTION	SIGNAL
PIN1	IN-COM	0121
PIN2	FWR	IN0 0/04
PIN3	REV	IN1 0/05
PIN4	STOP	IN2 NDT USED
PIN5	M0	IN3 0/07
PIN6	M1	IN4 0/06
PIN7	ALARM RESET	IN5 0/09
PIN8	FREE SYGNAL	IN6 NDT USED
PIN9	COM	NDT USED
PIN10	TH	NDT USED
PIN11	TH	NDT USED
PIN12	VH	NDT USED
PIN13	VM	NDT USED
PIN14	VL	NDT USED
PIN15	SPEED OUT+	OUT+ NDT USED
PIN16	SPEED OUT-	OUT- NDT USED
PIN17	ALARM OUT+	OUT+ 0130
PIN18	ALARM OUT-	OUT- I/10

UNLESS OTHERWISE SPECIFIED:		DATE: 07/19/23	APPROVED BY: [Signature]
REV: B	DATE: 8/22/23	DESCRIPTION: INITIAL RELEASE	SCALE: B
PART DESCRIPTION: AC_POWER_AND_DRIVES		PART NUMBER: 1003056	

TOLERANCES: FRACTIONS: .125" (3mm) ALL DIMENSIONS UNLESS NOTED
 DECIMALS: .0005" (0.125mm) .001" (0.25mm) .002" (0.5mm) .005" (0.125mm)
 ANGLES: 45° 90° 120° 135° 150°
 DIMENSIONS: .0005" (0.125mm) .001" (0.25mm) .002" (0.5mm) .005" (0.125mm) .010" (0.25mm) .020" (0.5mm) .050" (1.25mm) .100" (2.5mm) .200" (5.0mm) .500" (12.5mm) 1.000" (25.4mm)

THE INFORMATION AND DESIGNS CONTAINED IN THIS DRAWING ARE CONFIDENTIAL AND THE PROPRIETARY PROPERTY OF A.J. ANTUNES & CO. NEITHER THIS DESIGN NOR ANY INFORMATION CONTAINED HEREIN MAY BE REPRODUCED OR DISCLOSED TO OTHERS WITHOUT THE EXPRESS WRITTEN CONSENT OF A.J. ANTUNES & CO.



GAUGE	COLOR	DESCRIPTION	SIZE	QTY
18G	BLUE	24V+ / SOURCE SIGNAL	20'	3
18G	BLUE/WHITE	24V- / COMMON SIGNAL	20'	1

I/O	DESCRIPTION
I/00	LEFT MTR UP (SW1:DRG)
I/01	LEFT MTR DOWN (SW1:BLK/RED)
I/02	RIGHT MTR UP (SW2:WHT/RED)
I/03	RIGHT MTR DOWN (SW2:RED/GRN)
I/04	LEFT MTR UP POS. LS (SW1:WHT)
I/05	LEFT MTR DOWN POS. LS (SW1:GRN)
I/06	RIGHT MTR UP POS. LS (SW2:GRN/WHT)
I/07	RIGHT MTR DOWN POS. LS (SW2:BLK/RED)
I/08	RESET ALARMS
I/09	LEFT MTR ALARM
I/10	RIGHT MTR ALARM
I/11	RESET BELT COUNTER

AJ# MOD01-00499
PLC0220

PLC I/O RIBBON CBL
MOD01-00502

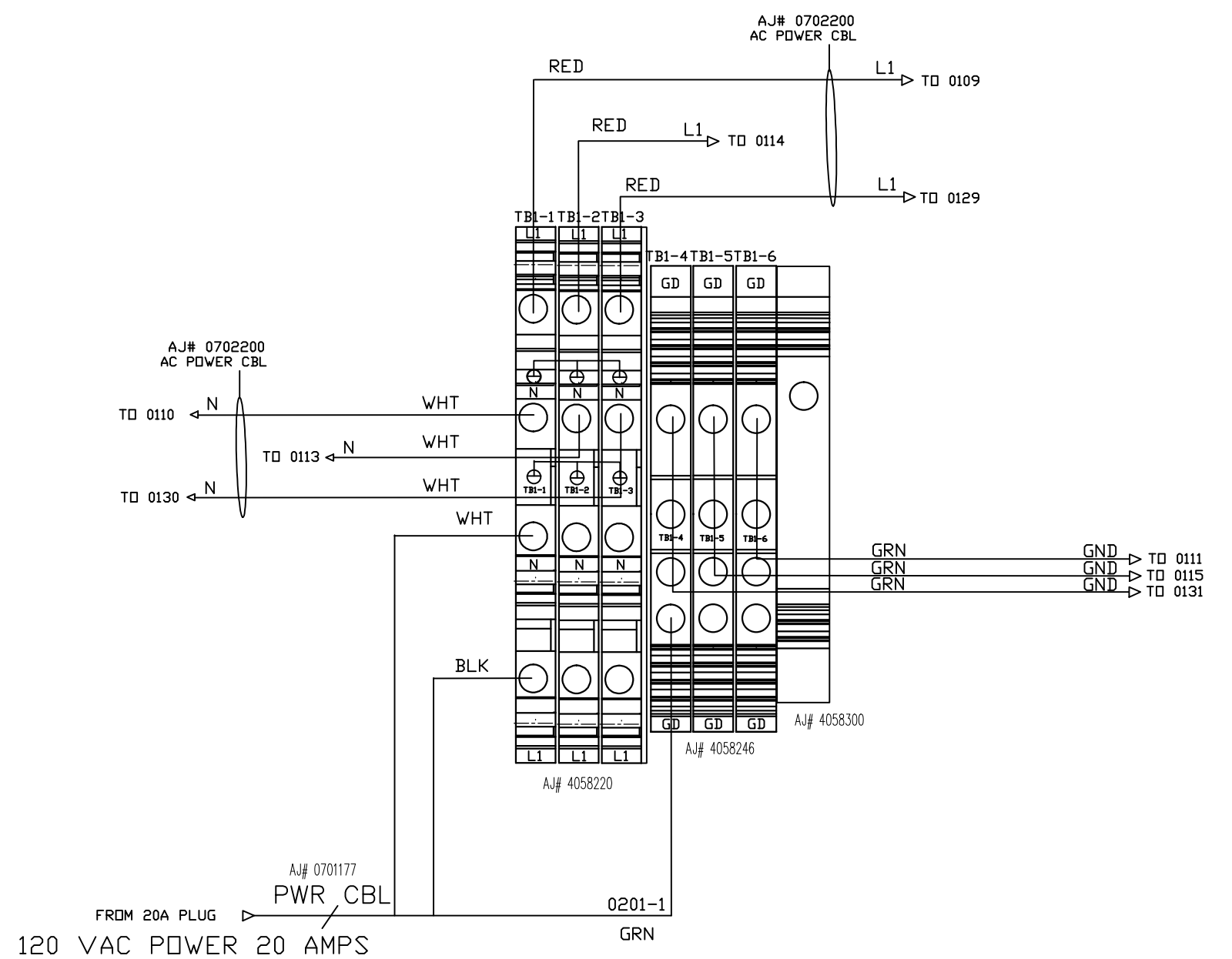
UNLESS OTHERWISE SPECIFIED: DIMENSIONS ARE IN INCHES TOLERANCES: FRACTIONS .125" (3mm) ALL DIMENSIONS UNLESS NOTED DECIMALS .005" (0.125mm) .001" (0.025mm) .0005" (0.0125mm) .0002" (0.005mm) .0001" (0.0025mm)		DATE: 07/19/23 DRAWING: 2-OF-11
REV: B DATE: 11/8/23 ECH NO.: PC102015 DESCRIPTION: POWER SUPPLY and REFERENCE UPDATE	REV: A DATE: 8/22/23 ECH NO.: PDR00341 DESCRIPTION: INITIAL RELEASE	PART DESCRIPTION: GLS-2_WIRING_DIAGRAM ADDITIONAL DETAIL: DC_DEVICES_AND_PLC_CONTROLLER PART NUMBER: 1003056

Antunes
NO COMPLIANCE COMPANY
NO INCHES, MILLIMETERS, DECIMALS, OR OTHER

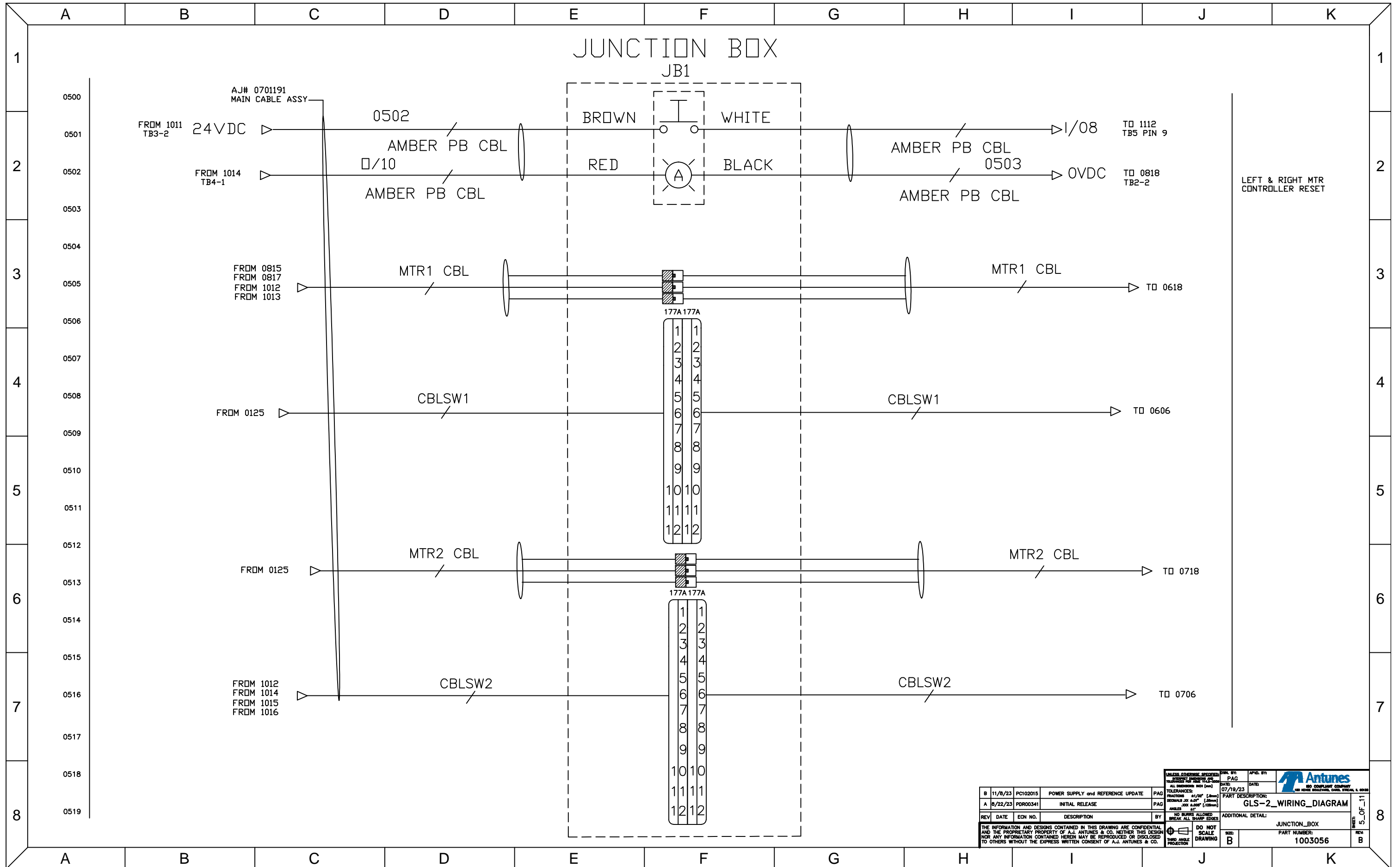
DO NOT SCALE DRAWING
THIRD ANGLE PROJECTION

TB1 - A/C POWER

	AJA #	DESCRIPTION	Quantity
24	4050104	3 POLE JUMPER	2
26	4058299	END COVER DOUBLE TERMINAL	1
28	4058220	DOUBLE TERM - TB#1	3
29	4058246	GROUND TERM	3
30	4058300	TERMINAL BLOCK END STOP	1



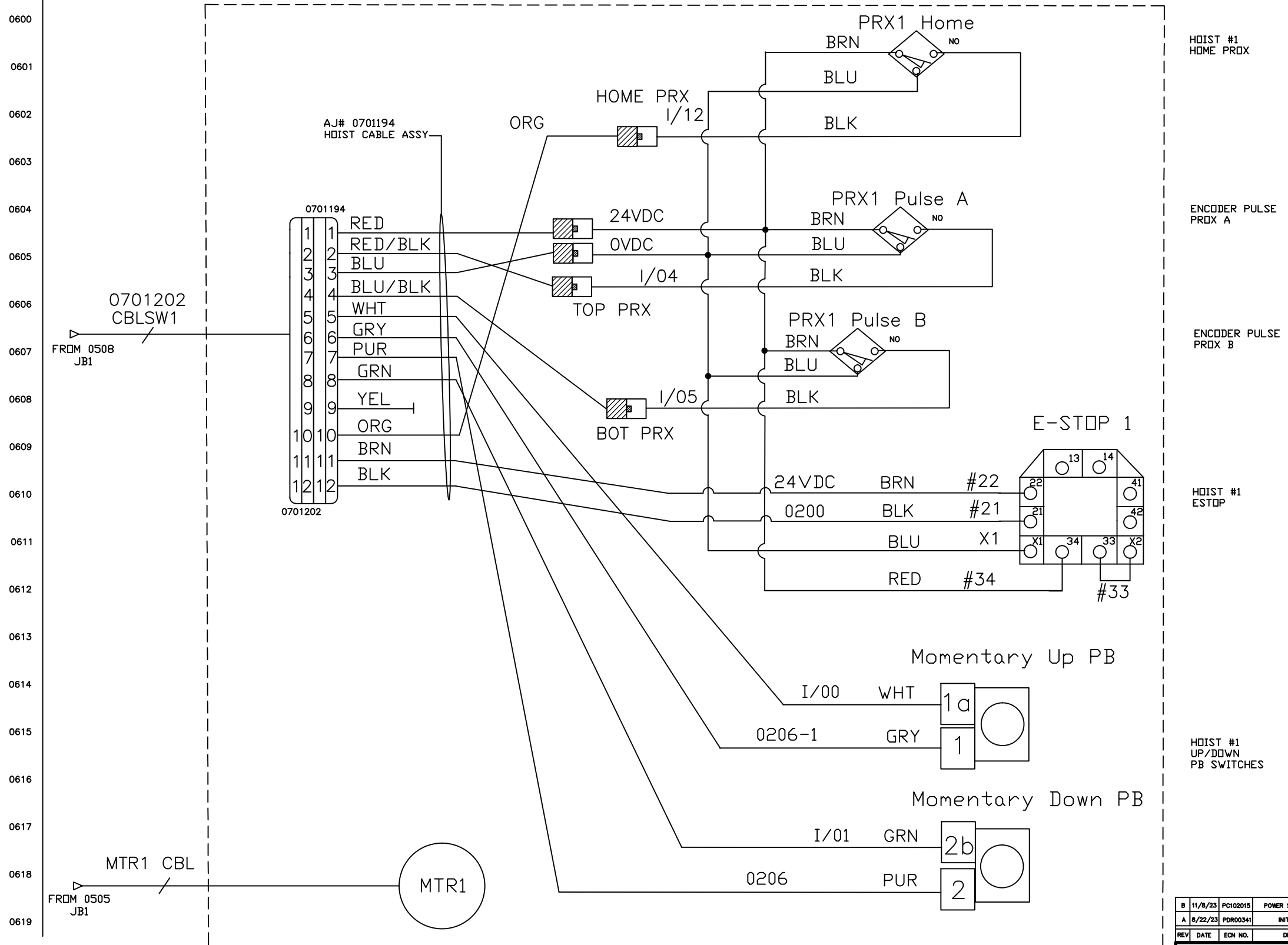
UNLESS OTHERWISE SPECIFIED		DATE: 07/19/23	DATE: 07/19/23	 <small>NO COMPLIANCE COMPANY</small>	
REV: B	DATE: 11/8/23	ECH NO.: PC102015	DESCRIPTION: POWER SUPPLY and REFERENCE UPDATE	PAG: 1	SCALE: 1:1
REV: A	DATE: 8/22/23	ECH NO.: PDR00341	DESCRIPTION: INITIAL RELEASE	PAG: 1	SCALE: 1:1
<small>THE INFORMATION AND DESIGNS CONTAINED IN THIS DRAWING ARE CONFIDENTIAL AND THE PROPRIETARY PROPERTY OF A.J. ANTUNES & CO. NEITHER THIS DESIGN NOR ANY INFORMATION CONTAINED HEREIN MAY BE REPRODUCED OR DISCLOSED TO OTHERS WITHOUT THE EXPRESS WRITTEN CONSENT OF A.J. ANTUNES & CO.</small>			<small>DO NOT SCALE DRAWING</small>		
<small>TERMINAL_BLOCK_1_DETAIL</small>			<small>PART NUMBER: 1003056</small>		



UNLESS OTHERWISE SPECIFIED:		DATE: 07/19/23	APPROVED BY: [Signature]
REV	DATE	DESCRIPTION	BY
B	11/8/23	PC102015 POWER SUPPLY and REFERENCE UPDATE	PAG
A	8/22/23	PDR00341 INITIAL RELEASE	PAG
TOLERANCES: FRACTIONS: 1/32" (3mm) DECIMALS: .01" (0.25mm) ANGLES: 30° 0.005" (0.127mm)			PART DESCRIPTION: GLS-2_WIRING_DIAGRAM ADDITIONAL DETAIL: JUNCTION_BOX PART NUMBER: 1003056
THE INFORMATION AND DESIGNS CONTAINED IN THIS DRAWING ARE CONFIDENTIAL AND THE PROPRIETARY PROPERTY OF A.J. ANTUNES & CO. NEITHER THIS DESIGN NOR ANY INFORMATION CONTAINED HEREIN MAY BE REPRODUCED OR DISCLOSED TO OTHERS WITHOUT THE EXPRESS WRITTEN CONSENT OF A.J. ANTUNES & CO.			DO NOT SCALE DRAWING THIRD ANGLE PROJECTION

5_OF_11
REV B

HOIST #1



HOIST #1
HOME PROX

ENCODER PULSE
PROX A

ENCODER PULSE
PROX B

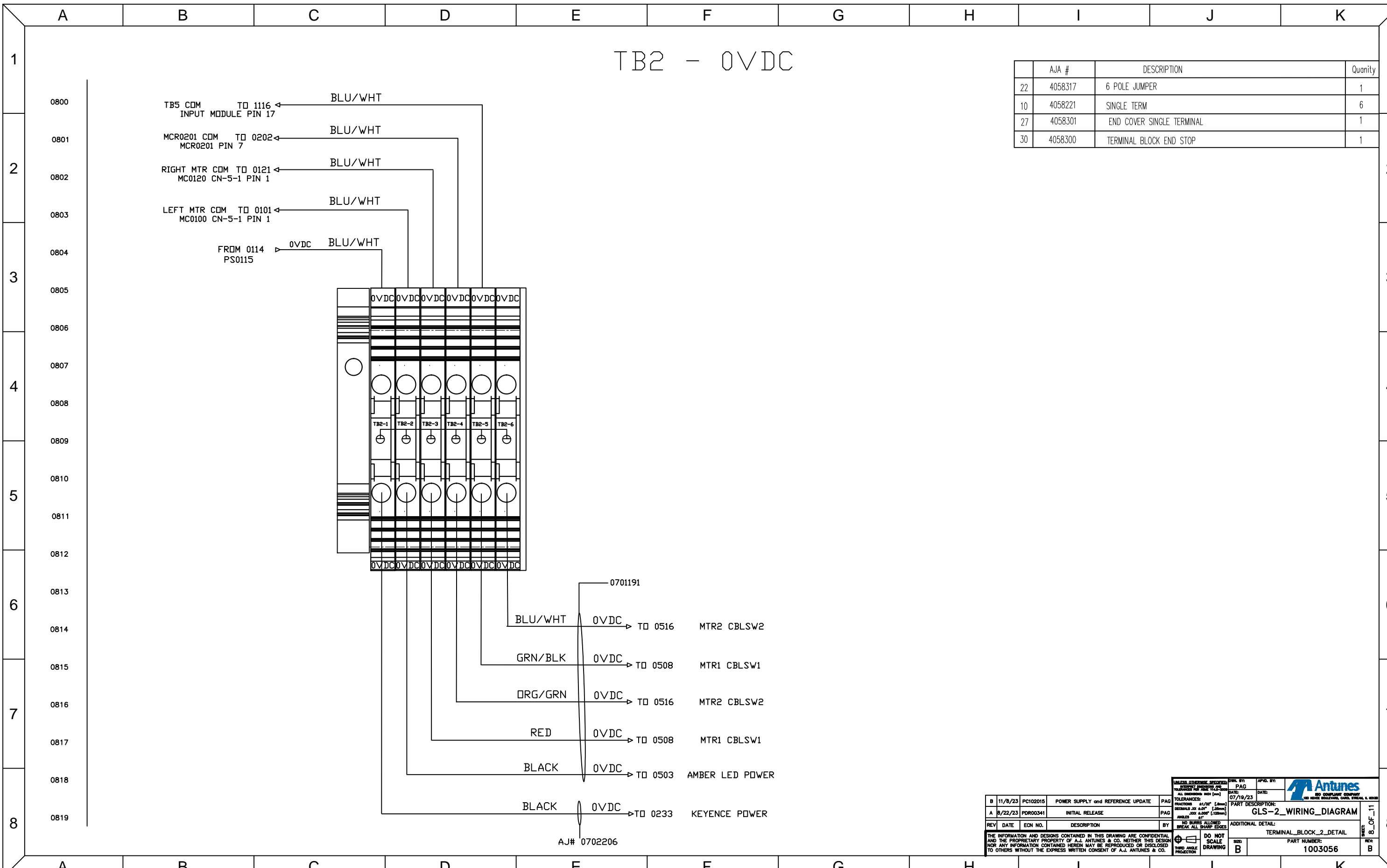
HOIST #1
ESTOP

HOIST #1
UP/DOWN
PB SWITCHES

UNLESS OTHERWISE SPECIFIED		DATE: 07/19/23	APPROVED BY: [Signature]
REV: B	DATE: 11/8/23	DESCRIPTION: POWER SUPPLY and REFERENCE UPDATE	PAGE: 1
REV: A	DATE: 8/22/23	DESCRIPTION: INITIAL RELEASE	PAGE: 1
TOLERANCES: FRACTIONS: .125" (3mm) ALL DIMENSIONS UNLESS OTHERWISE SPECIFIED		PART DESCRIPTION: GLS-2_WIRING_DIAGRAM	
NO BURRS ALLOWED. BREAK ALL SHARP EDGES.		ADDITIONAL DETAIL: HOIST_1_WIRING	
DO NOT SCALE DRAWING		PART NUMBER: 1003056	
THIRD ANGLE PROJECTION		SHEET: 6_OF_11	

TB2 - 0VDC

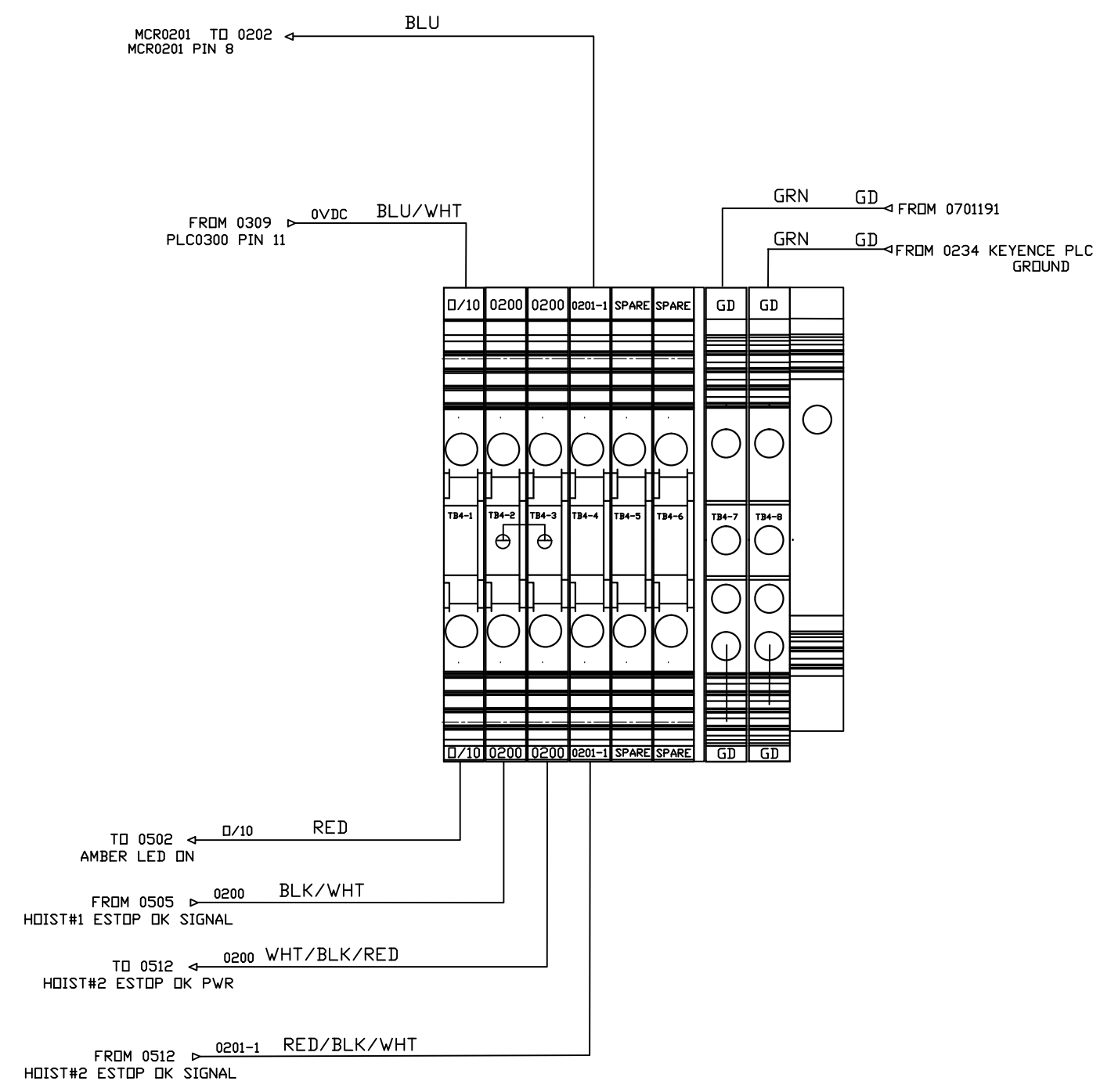
	AJA #	DESCRIPTION	Quantity
22	4058317	6 POLE JUMPER	1
10	4058221	SINGLE TERM	6
27	4058301	END COVER SINGLE TERMINAL	1
30	4058300	TERMINAL BLOCK END STOP	1



UNLESS OTHERWISE SPECIFIED	DATE: 07/19/23	APPROVED BY: [Signature]	DATE: 07/19/23
RETURNS TO: [Signature]	PAGE: 1	NO COMPLIANCE COMPANY	NO COMPLIANCE COMPANY
TOLERANCES: FRACTIONS 1/16" (1.5mm) ALL DIMENSIONS UNLESS NOTED DECIMALS TO 0.01" (0.25mm) ANGLES 90°	PART DESCRIPTION: GLS-2_WIRING_DIAGRAM		
REV: B	DATE: 8/22/23	ECH NO.: PDR00341	DESCRIPTION: INITIAL RELEASE
NO BURRS ALLOWED BREAK ALL SHARP EDGES		ADDITIONAL DETAIL: TERMINAL_BLOCK_2_DETAIL	
DO NOT SCALE DRAWING		SIZE: B	PART NUMBER: 1003056
THE INFORMATION AND DESIGNS CONTAINED IN THIS DRAWING ARE CONFIDENTIAL AND THE PROPRIETARY PROPERTY OF A.J. ANTUNES & CO. NEITHER THIS DESIGN NOR ANY INFORMATION CONTAINED HEREIN MAY BE REPRODUCED OR DISCLOSED TO OTHERS WITHOUT THE EXPRESS WRITTEN CONSENT OF A.J. ANTUNES & CO.			

TB4 - SIGNALS

AJA #	DESCRIPTION	Quantity
10	4058221 SINGLE TERM	6
27	4058301 END COVER SINGLE TERMINAL	1
35	4050103 2 POLE JUMPER	2
29	4058246 GROUND TERM	2
30	4058300 TERMINAL BLOCK END STOP	1



<small>UNLESS OTHERWISE SPECIFIED:</small> TOLERANCES: FRACTIONS 1/16" (1.5mm) DECIMALS .001" (0.25mm) ANGLES .01" (0.25mm)		DATE: 07/19/23 DRAWN BY: [Signature] CHECKED BY: [Signature]	DATE: 07/19/23 DRAWN BY: [Signature] CHECKED BY: [Signature]
B 11/8/23 PCI02015 POWER SUPPLY and REFERENCE UPDATE A 8/22/23 PDR00341 INITIAL RELEASE	PAG 1 PAG 1	PART DESCRIPTION: GLS-2_WIRING_DIAGRAM ADDITIONAL DETAIL: TERMINAL_BLOCK_4_DETAIL	
REV DATE ECH NO. DESCRIPTION BY	DO NOT SCALE DRAWING	SIZE: B	PART NUMBER: 1003056



REV: 9_OF_11
REV: B

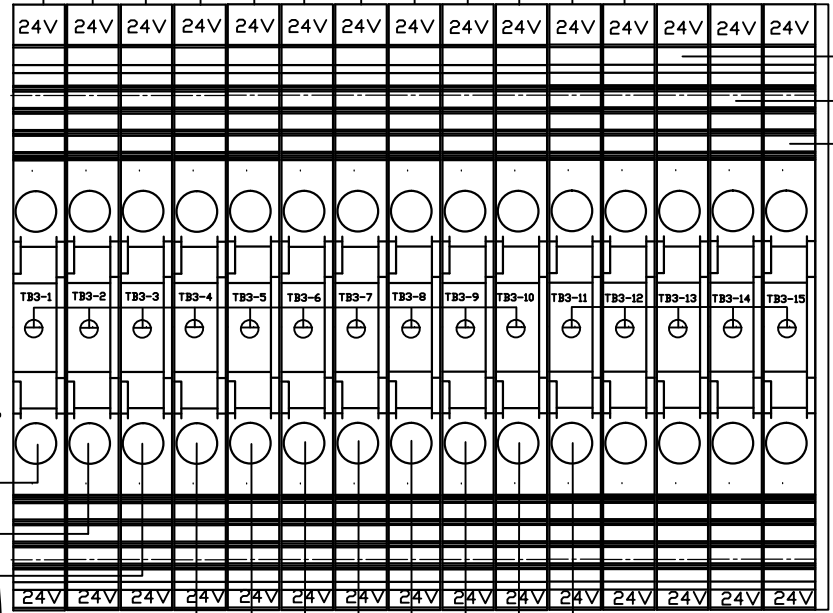
TB3 - 24VDC

AJ# 0702201
PLC 24VDC

- BLU 24VDC PLC0300 I/00 24V-00 TD 0304
- BLU 24VDC PLC0300 I/01 24V-01 TD 0304
- BLU 24VDC PLC0300 I/02 24V-02 TD 0305
- BLU 24VDC PLC0300 I/03 24V-03 TD 0305
- BLU 24VDC PLC0300 I/04 24V-04 TD 0306
- BLU 24VDC PLC0300 I/05 24V-05 TD 0306
- BLU 24VDC PLC0300 I/06 24V-06 TD 0307
- BLU 24VDC PLC0300 I/07 24V-07 TD 0307
- BLU 24VDC PLC0300 I/08 24V-08 TD 0308
- BLU 24VDC PLC0300 I/09 24V-09 TD 0308
- BLU 24VDC PLC0300 I/10 24V-10 TD 0309
- BLU 24VDC TD 0205
- PB0205 24V+
COUNT RESET PB

- AJ# 0702202
PLC OUTPUT CBL
- 24VDC BLU
- RIGHT MTR ALM TO 0128
MC0120 CN-5-1 PIN 17
- 24VDC BLU
- LEFT MTR ALM TO 0108
MC0100 CN-5-1 PIN 17
- 24VDC BLU
- FROM 0114
PS0115

- AJ# 0702206
- 24V 24V 24V 24V 24V 24V 24V 24V 24V 24V 24V 24V 24V 24V
- RED
- KEYENCE PLC PWR TO 0232 ← 24VDC
- BROWN
- AMBER LED PWR TO 0502 ← 24VDC
- BLU/BLK
- CBLSW1 TO 0508 ← 24VDC
- BLU/RED
- CBLSW2 TO 0516 ← 24VDC
- WHT/BLK
- CBLSW1 TO 0508 ← 24VDC
- RED/WHT
- CBLSW2 TO 0516 ← 24VDC
- ORG/RED
- CBLSW2 TO 0516 ← 24VDC
- BLU
- CBLSW2 TO 0516 ← 24VDC
- BLK
- CBLSW1 TO 0508 ← 24VDC
- 0701191

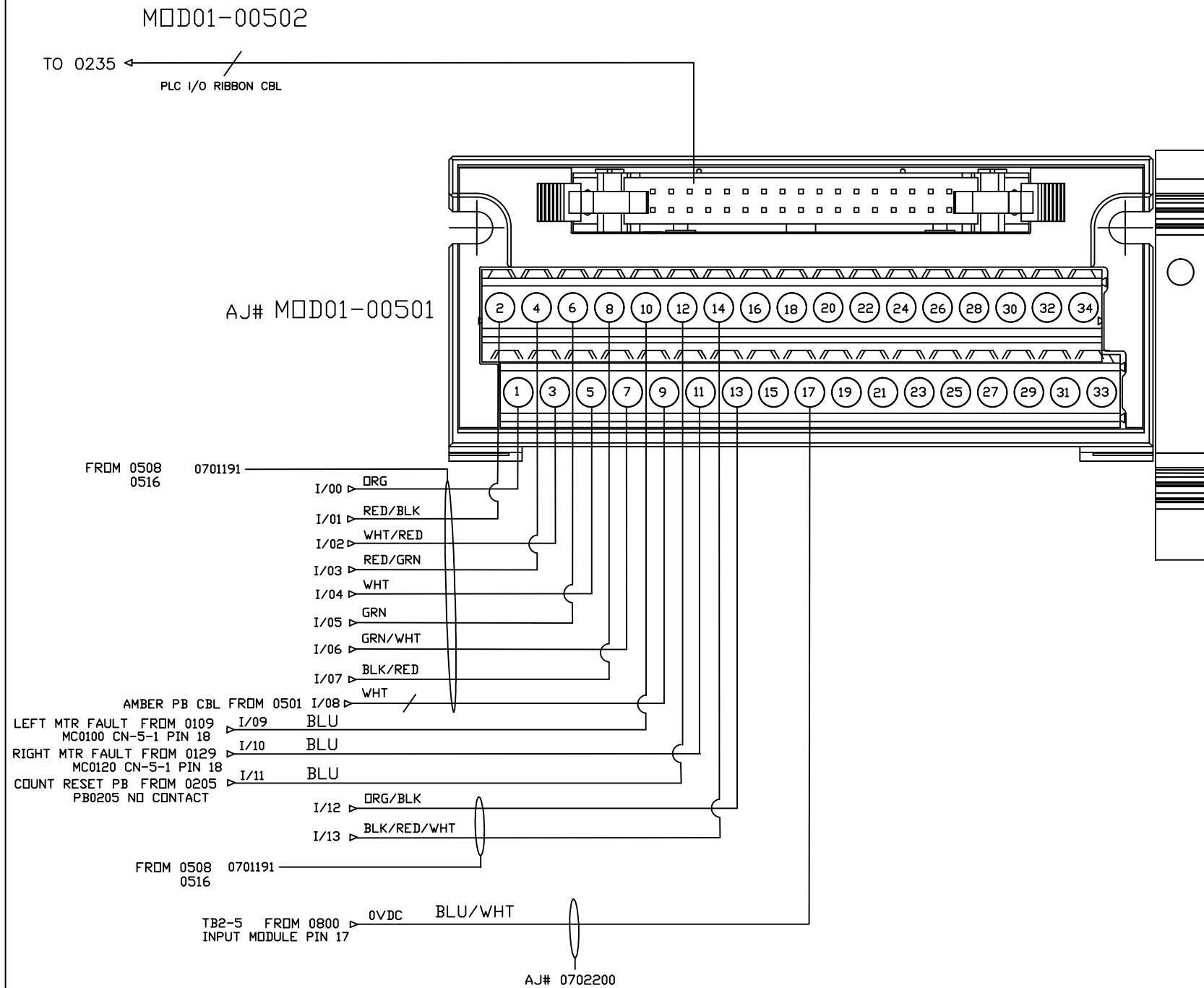


AJA #	DESCRIPTION	Quantity
10	4058221 SINGLE TERM	15
11	4050104 10 POLE JUMPER	1
23	4058316 5 POLE JUMPER	1
27	4058301 END COVER SINGLE TERMINAL	1
29	4058246 GROUND TERM	3
30	4058300 TERMINAL BLOCK END STOP	1

UNLESS OTHERWISE SPECIFIED		DATE: 07/19/23	APPLICABLE BY: [Signature]
REV: B	DATE: 8/22/23	DESCRIPTION: INITIAL RELEASE	PART DESCRIPTION: CFA-QUANTUM_FRYER
TOLERANCES: FRACTIONS: .125" (3.175mm) DECIMALS: .001" (0.025mm) ANGLES: 30° (30°) UNLESS OTHERWISE SPECIFIED		DO NOT SCALE DRAWING	
THE INFORMATION AND DESIGNS CONTAINED IN THIS DRAWING ARE CONFIDENTIAL AND THE PROPRIETARY PROPERTY OF A.J. ANTUNES & CO. NEITHER THIS DESIGN NOR ANY INFORMATION CONTAINED HEREIN MAY BE REPRODUCED OR DISCLOSED TO OTHERS WITHOUT THE EXPRESS WRITTEN CONSENT OF A.J. ANTUNES & CO.		PART NUMBER: 1003056	

TB5 - PLC INPUTS

	AJA #	DESCRIPTION	Quantity
9	MOD01-00502	32PIN IO RIBBON CABLE 1M	1
18	MOD01-00501	KEYENCE IO BREAKOUT TERMINAL BLOCK	1
30	4058300	TERMINAL BLOCK END STOP	1



UNLESS OTHERWISE SPECIFIED		DATE: 07/19/23	DATE: 07/19/23	 <small>NO COMPLIANCE COMPANY NO INHIBIT BOLLING, DALL, STRAL & 0080</small>	
REV: B	DATE: 11/8/23	ECH NO.: PC102015	DESCRIPTION: POWER SUPPLY and REFERENCE UPDATE	BY: PAG	SCALE: B
REV: A	DATE: 8/22/23	ECH NO.: PDR00341	DESCRIPTION: INITIAL RELEASE	BY: PAG	SCALE: B
<small> TOLERANCES: FRACTIONS 1/16" (1.5mm) DECIMALS .001" (0.25mm) ANGLES .001" (0.25mm) </small>			<small> PART DESCRIPTION: GLS-2_WIRING_DIAGRAM </small>		
<small> THE INFORMATION AND DESIGNS CONTAINED IN THIS DRAWING ARE CONFIDENTIAL AND THE PROPRIETARY PROPERTY OF A.J. ANTUNES & CO. NEITHER THIS DESIGN NOR ANY INFORMATION CONTAINED HEREIN MAY BE REPRODUCED OR DISCLOSED TO OTHERS WITHOUT THE EXPRESS WRITTEN CONSENT OF A.J. ANTUNES & CO. </small>			<small> ADDITIONAL DETAIL: TERMINAL_BLOCK_5_DETAIL </small>		
<small> DO NOT SCALE DRAWING THIRD ANGLE PROJECTION </small>			<small> PART NUMBER: 1003056 </small>		