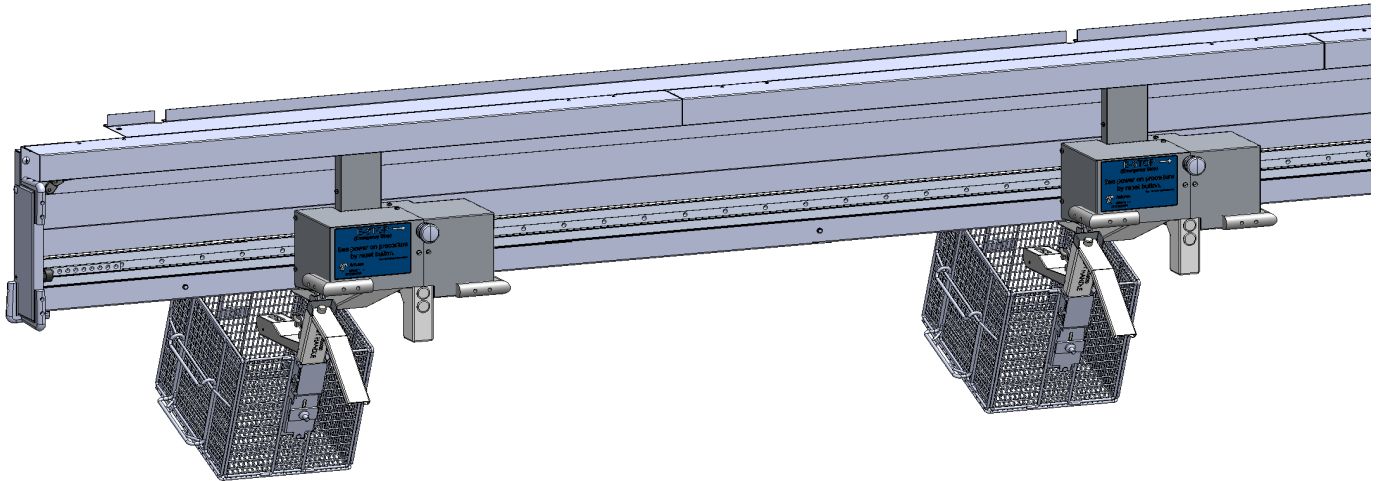
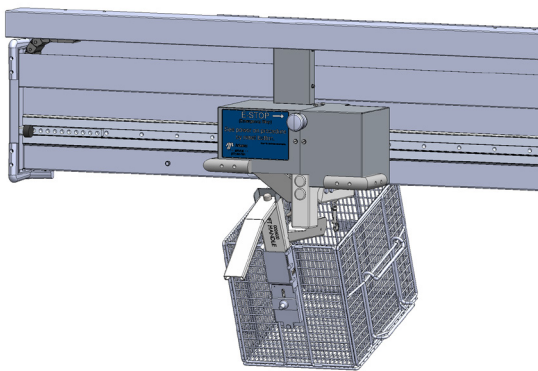


Gantry Lift System | GLS-2

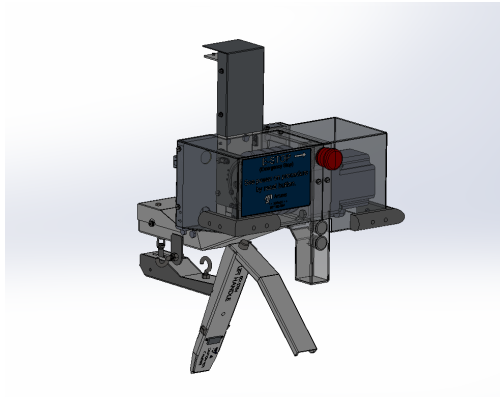


The Antunes Gantry Lift System (GLS-2) is designed to effortlessly lift the fillet and nugget baskets from the fryer without bearing any of the weight on a Team Member.

The hoist cable attaches to the fryer handle and engages into the fryer basket. Push button activates the hoist to raises the basket out of the fryer and also to lower it onto the CTS. The basket glides easily on the integrated rail system where it is transported to the CTS.



Gantry Lift System | GLS-2



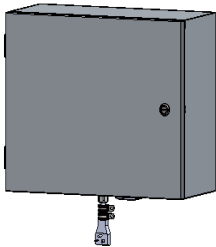
Features:

- Mechanical lift system designed for Quantum fryers only
- Push button lifts the weight of Quantum 6 tier or nugget baskets from fryer
- Gantry and rail system mount to existing ventilation hood
- Positive lock fryer handle ensures proper engagement to fryer basket

GLS-2

| Model | Approvals | Electrical Ratings | | | Dimensions | | | | |
|--|-----------|------------------------|----------|---------|----------------------|---------------------|-----------------------|--------------------|-------------------|
| | | Plug | Volts | Amps | Electrical Box Width | Electical Box Depth | Electrical Box Height | Signal Cord Length | Power Cord Length |
| GLS-2 Includes 3 handles, 2 hoists, & 1 electrical box | | NEMA 5-20 90 Degree | 120 Volt | 17 Amps | 20" (3830 mm) | 9" (185 mm) | 16" (222 mm) | 20 ft | 4.5 ft |

Electrical Box | Included with the GLS-2



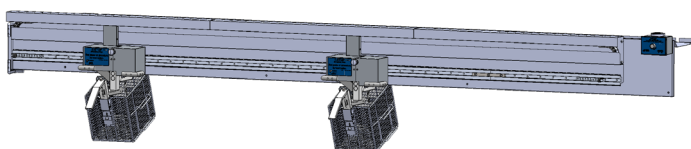
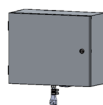
Rail Kits

Dimensions

| Model | Width | Depth | Height |
|--|----------------------|-------------------|-------------------|
| 7002757 151" Rail, Energy Chain & Cable Kit | 150.79" (3830 mm) | 7.29" (185 mm) | 8.74" (222 mm) |
| 7002758 191" Rail, Energy Chain and Cable Kit | 188.58" (4790 mm) | 7.29" (185 mm) | 8.74" (222 mm) |

Note: The Gantry hoists are mounted to a Rail Kit that is sold separately. The length of the fryer hood will determine which Rail Kit is needed. One Rail Kit needed per system.

Entire System View | GLS-2 & Rail Kit



Gantry Lift System | GLS-2

Gantry Layout | GLS-2 & Rail Kit

The electrical box requires mounting to the front or side of the exhaust hood. Includes 4.5' Right angle NEMA 5-20 power cord.

